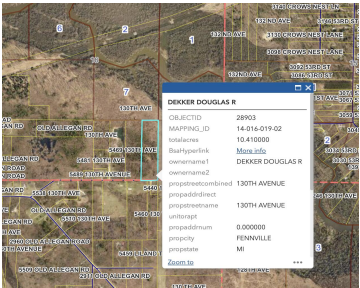
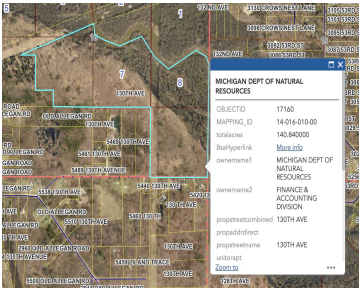
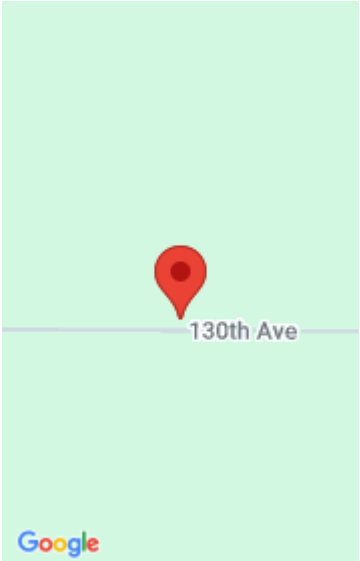




10 wooded acres! This acreage borders 100's of acres of State Land for your additional enjoyment and privacy. The Kalamazoo River runs through the state land just steps away from the north end of this parcel. It's a private and secluded parcel on an unpaved, short, dead end road. It is great area for hunting, [...]



- 0 baths
- Acreage
- Land
- Active



Basics

Category: Land

Status: Active

Lot size: 10.16 sq ft

County: Allegan

Type: Acreage

Bathrooms: 0 baths

Lot Size Acres: 10.16 acres

Building Details

Current Use: Recreational, Hunting

Amenities & Features

Utilities: Electricity Available, Cable Available, None

Waterfront Features: River, Stream/Creek

Lot Features: Adj to Public Land, Buildable, Wooded

Fees & Taxes

Tax Assessed Value: \$46,219

Tax Year: 2025

Tax Annual Amount: \$2,221

School Information

High School District: Fennville

HighSchool: Fennville High School

Elementary School: Fennville Elementary School

Miscellaneous

Call us now

Road Surface Type: Unimproved

CrossStreet: 130th and Old allegan

Listing Terms: Cash, Conventional

Call us now



Phone: (231)730-8781
Email: tuckerbennerteam@gmail.com
Address: 2747 Lakeshore Drive, Twin Lake, MI 49457

