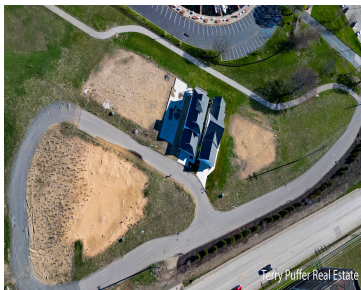


BOARDWALK COVE, MUSKEGON, MI, 49441

<https://tuckerbenner.com>



Discover the perfect canvas for your vision with 12 waterfront and 9 water-facing buildable lots. Ideal for builders and developers seeking an exceptional investment opportunity. This expansive parcel promises endless possibilities in a highly sought-after location, nestled between the prestigious Hartshorn Marina and the prestigious \$250 million Adelaide Point development. With breathtaking water views and [...]

- 0 baths
- Acreage
- Land
- Active



Basics

Category: Land **Type:** Acreage
Status: Active **Bathrooms:** 0 baths
Lot size: 3.24 sq ft **Subdivision Name:** Current HOA in place Hartshorn Village
Lot Size Acres: 3.24 acres **County:** Muskegon



Call us now

Phone: (231)730-8781
Email: tuckerbennerteam@gmail.com
Address: 2747 Lakeshore Drive, Twin Lake, MI 49457



Amenities & Features

Utilities: Public Water Connected, Public Sewer Connected, Natural Gas Connected, Electric Connected, Phone Available, Cable Available, Broadband Available

Lot Features: Level, Buildable, Cleared, Cul-De-Sac, Sidewalk

Waterfront Features:
All Sports, Shared Frontage

Fees & Taxes

Tax Year: 2023

School Information

High School District: Muskegon

Miscellaneous

Road Surface Type: Paved

CrossStreet: Western & Division

Listing Terms: Cash, Conventional



Call us now

Phone: (231)730-8781

Email: tuckerbennerteam@gmail.com

Address: 2747 Lakeshore Drive, Twin Lake, MI 49457

