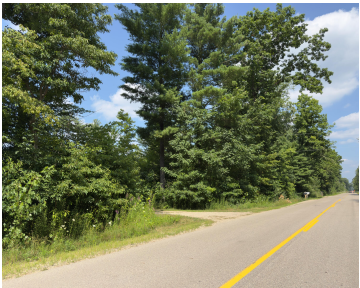


JOHNSON, GRAND HAVEN, MI, 49417

<https://tuckerbenner.com>



Great split-able – buildable 10.12 Acres in Robinson Twp. Seller has not had a vacant land evaluation done. According to township records – 3 possible splits are available off a private drive. Seller is currently clearing the land of some stuff so should be clear before to long. There are trails through out the property [...]

- 0 baths
- Acreage
- Land
- Active



Basics

Category: Land

Status: Active

Lot size: 10.12 sq ft

County: Ottawa

Type: Acreage

Bathrooms: 0 baths

Lot Size Acres: 10.12 acres

Amenities & Features

Utilities: Electricity Available, None

Lot Features: Buildable, Wooded

Fees & Taxes

Tax Assessed Value: \$51,813

Tax Year: 2024

Tax Annual Amount: \$2,107

School Information

High School District: Grand Haven

Miscellaneous

Road Surface Type: Paved

CrossStreet: Albright Ave & Wildflower Ln

Listing Terms: Cash, Conventional

Call us now