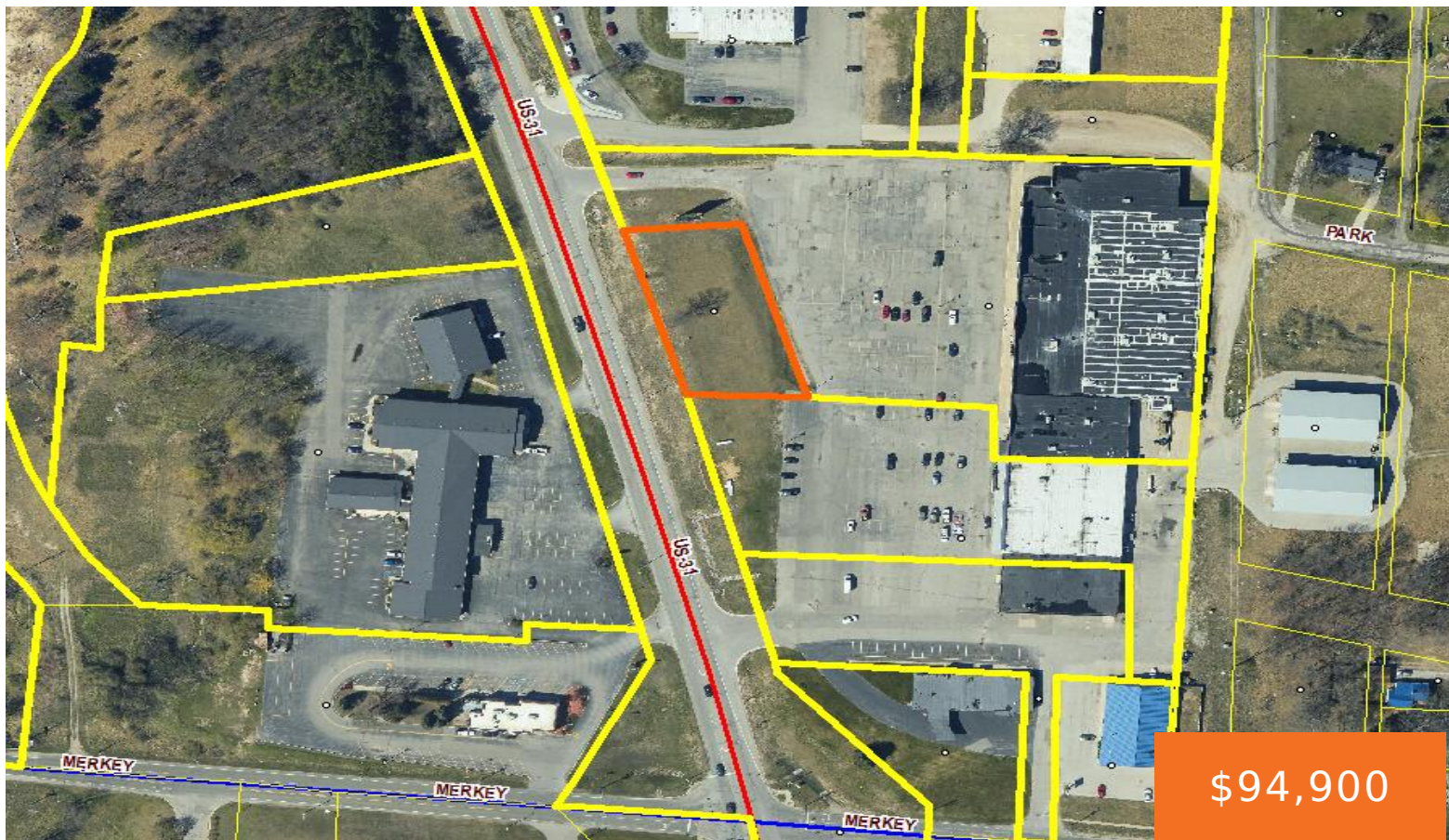


MANISTEE, MANISTEE, MI, 49660
<https://tuckerbenner.com>



Great out lot in Prime location to build your own commercial adventure. Lot has great site appeal and plenty of parking options. Level building site. This lot sits out front of Gilroy’s Hardware, new SOS office, Across from Days Inn, Wendys.

- 0 baths
- Commercial Land
- Land
- Active



Basics

Category: Land

Status: Active

Lot size: 0.6 sq ft

County: Manistee

Type: Commercial Land

Bathrooms: 0 baths

Lot Size Acres: 0.6 acres

Building Details

Current Use: Commercial

Amenities & Features

Utilities: Phone Available, Water Available, None

Lot Features: Buildable

Fees & Taxes

Tax Assessed Value: \$21,100

Tax Year: 2024

Tax Annual Amount: \$1,196

School Information

High School District: Manistee

Miscellaneous

Road Surface Type: Paved

CrossStreet: Merkey

Listing Terms: Cash, Conventional

Call us now