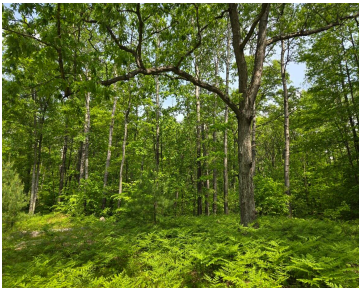
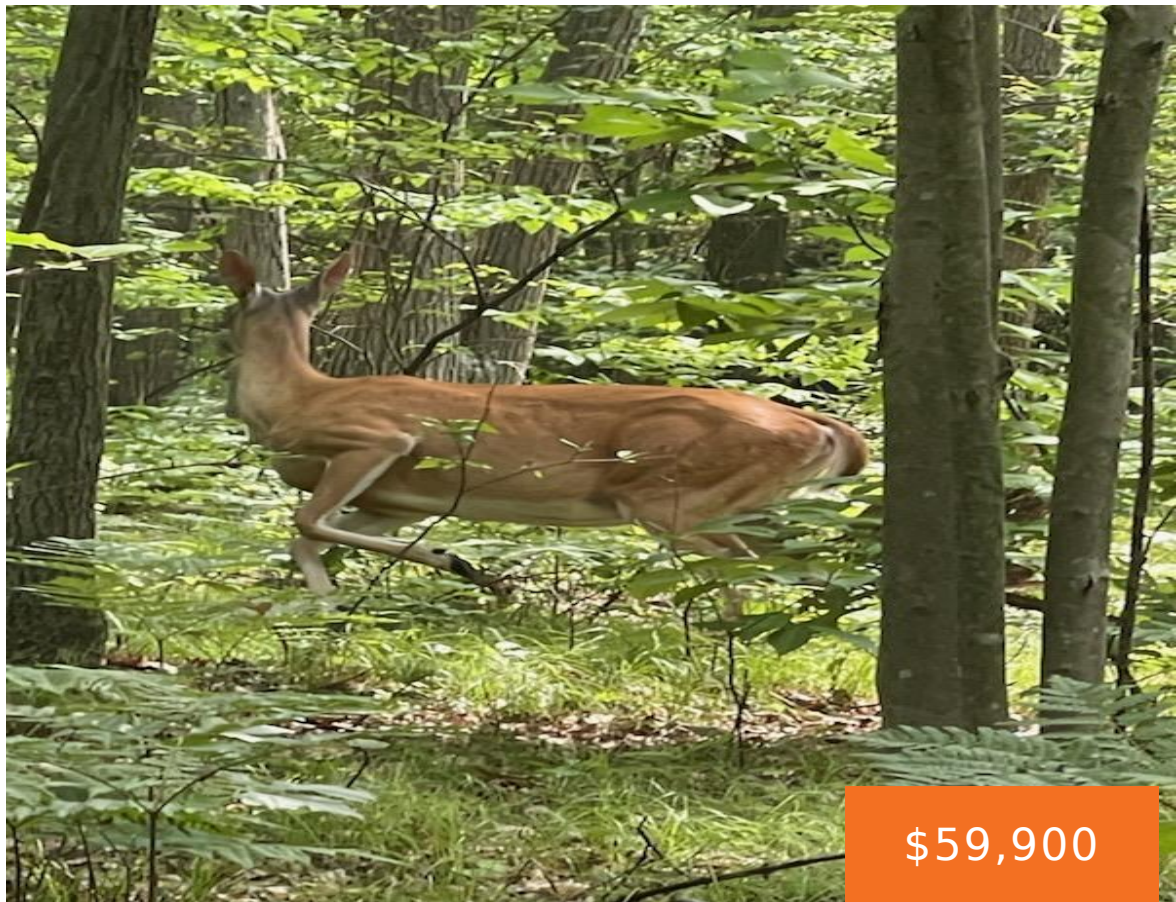


CYPRESS, PARIS, MI, 49338

<https://tuckerbenner.com>



This wooded 10 acre parcel located 15 minutes from Big Rapids boasts a mixutre of hardwoods and pines, an excellent hunting blind/shack, and borders hundreds of acres of state and federal land! A great getaway place, and excellent hunting here too!

- 0 baths
- Acreage
- Land
- Active



Basics

Category: Land

Status: Active

Lot size: 10 sq ft

County: Newaygo

Type: Acreage

Bathrooms: 0 baths

Lot Size Acres: 10 acres

Amenities & Features

Utilities: None

Fees & Taxes

Tax Assessed Value: \$10,361

Tax Annual Amount: \$762

Tax Year: 2024

School Information

High School District: Reed City

Miscellaneous

CrossStreet: 13 mile

Listing Terms: Cash, Conventional

Call us now