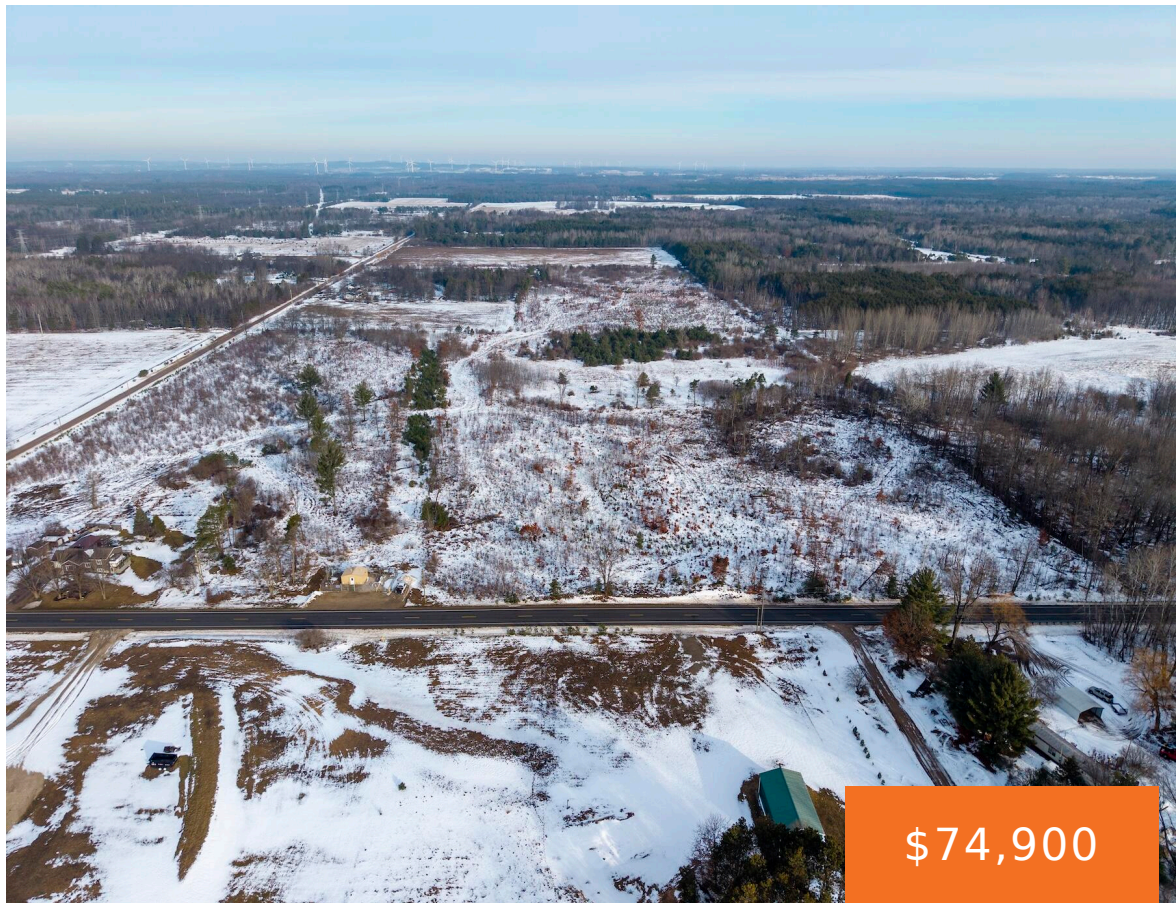


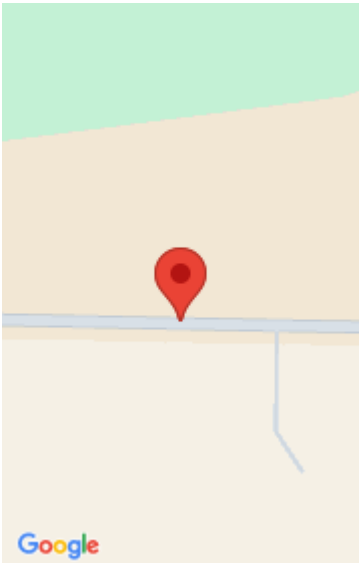
E MONROE RD., HART, MI, 49420

<https://tuckerbenner.com>



Location, location!! Here is your chance to build the home of your dreams just minutes from Pentwater Lake, restaurants, shopping, entertainment and Lake Michigan yet still enjoy a country setting and privacy! This buildable acreage is located just 2 miles from US 31 off a paved road with great views. If you're looking for land [...]

- 0 baths
- Acreage
- Land
- Active



Basics

Category: Land

Status: Active

Lot size: 7.5 sq ft

County: Oceana

Type: Acreage

Bathrooms: 0 baths

Lot Size Acres: 7.5 acres

Building Details

Current Use: Residential, Recreational, Hunting

Amenities & Features

Utilities: Electricity Available, None

Lot Features: Level, Buildable, Recreational

Fees & Taxes

Tax Assessed Value: \$100,000

Tax Year: 2025

Tax Annual Amount: \$75

School Information

High School District: Pentwater

Miscellaneous

Road Surface Type: Paved

CrossStreet: N 88th Ave. & E Monroe Rd.

Listing Terms: Cash, Conventional

Call us now