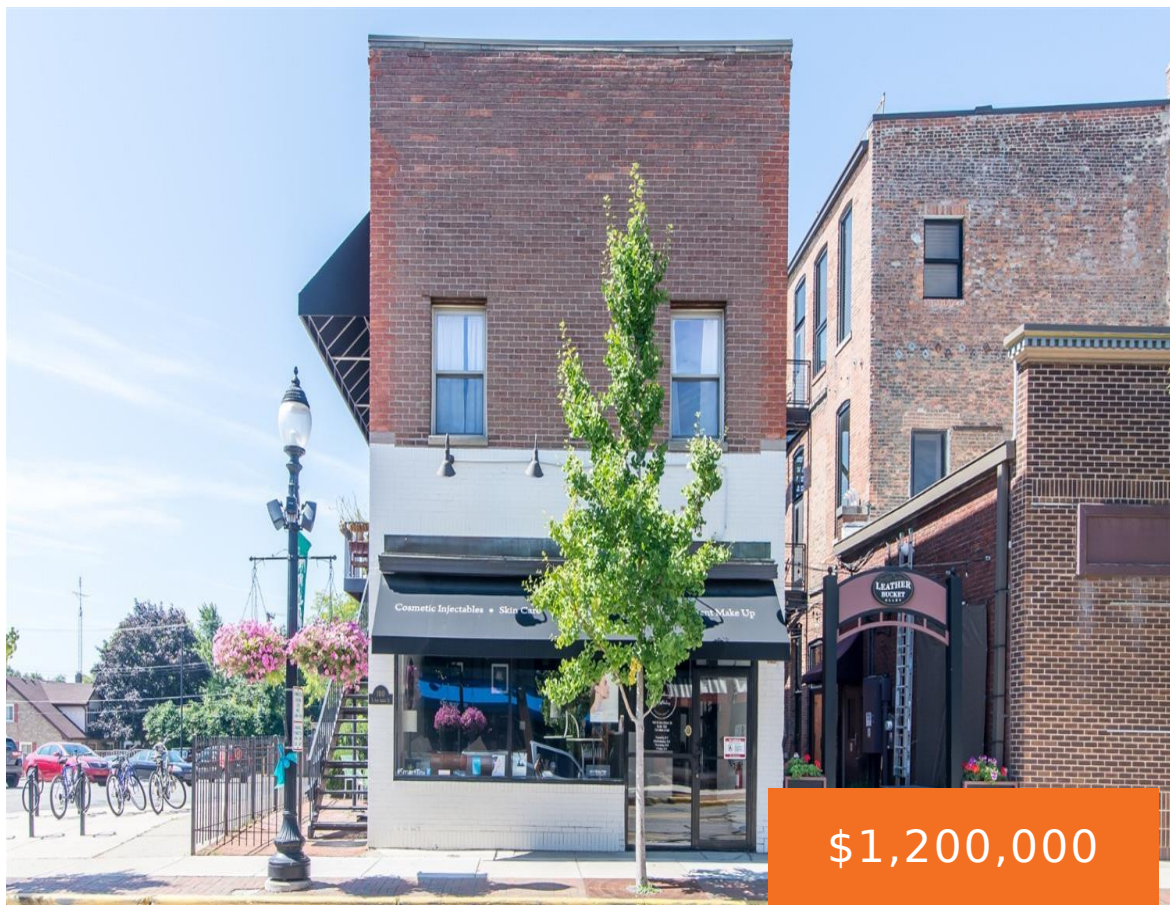
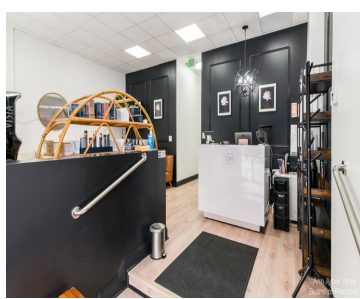
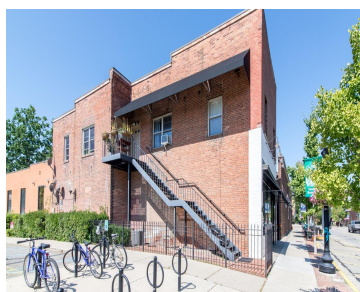


100, ANN ARBOR, SALINE, MI, 48176

<https://tuckerbenner.com>



\$1,200,000



Building contains two thriving businesses and two 2 bedroom/1 bath apartments. The sale is subject to the businesses staying in place. Everything has been updated in the last couple of years.

- 4 baths
- Retail/Commercial
- Commercial Sale
- Active



Basics

Category: Commercial Sale

Status: Active

Lot size: 0.15 sq ft

Subdivision Name: Crestwood Knolls 2

Lot Size Acres: 0.15 acres

County: Washtenaw

Type: Retail/Commercial

Bathrooms: 4 baths

Year built: 1920

Bathrooms Full: 4

Business Type: Other, Professional/Office



Call us now

Phone: (231)730-8781

Email: tuckerbennerteam@gmail.com

Address: 2747 Lakeshore Drive, Twin Lake, MI 49457



Building Details

Building Area Total: 4594 sq ft

Construction Materials: Brick

Stories Total: 2

Number Of Buildings: 1

Number Of Units Total: 4

Sewer: Public Sewer

Foundation Details: Other

Basement: Full

Amenities & Features

Inclusions: 1

Utilities: Phone Available, Public Water Available, Public Sewer Available, Natural Gas Available, Electric Available, Cable Available, Broadband Available, Phone Connected, Natural Gas Connected, Electric Connected, Cable Connected

Water Source: Public

Fireplaces Total: 1

Cooling: Window Unit(s),
Central Air

Fees & Taxes

Tax Assessed Value: \$294,000

Tax Year: 2024

Tax Annual Amount: \$19,107.31

School Information

High School District: Saline

Miscellaneous

Cross Street: Michigan Ave. & S. Ann Arbor

Listing Terms: Conventional, Cash



Call us now

Phone: (231)730-8781

Email: tuckerbennerteam@gmail.com

Address: 2747 Lakeshore Drive, Twin Lake, MI 49457

