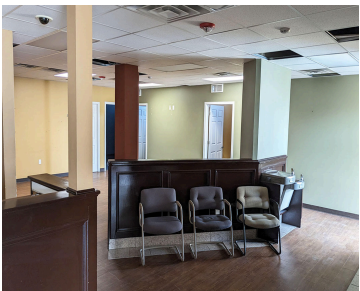
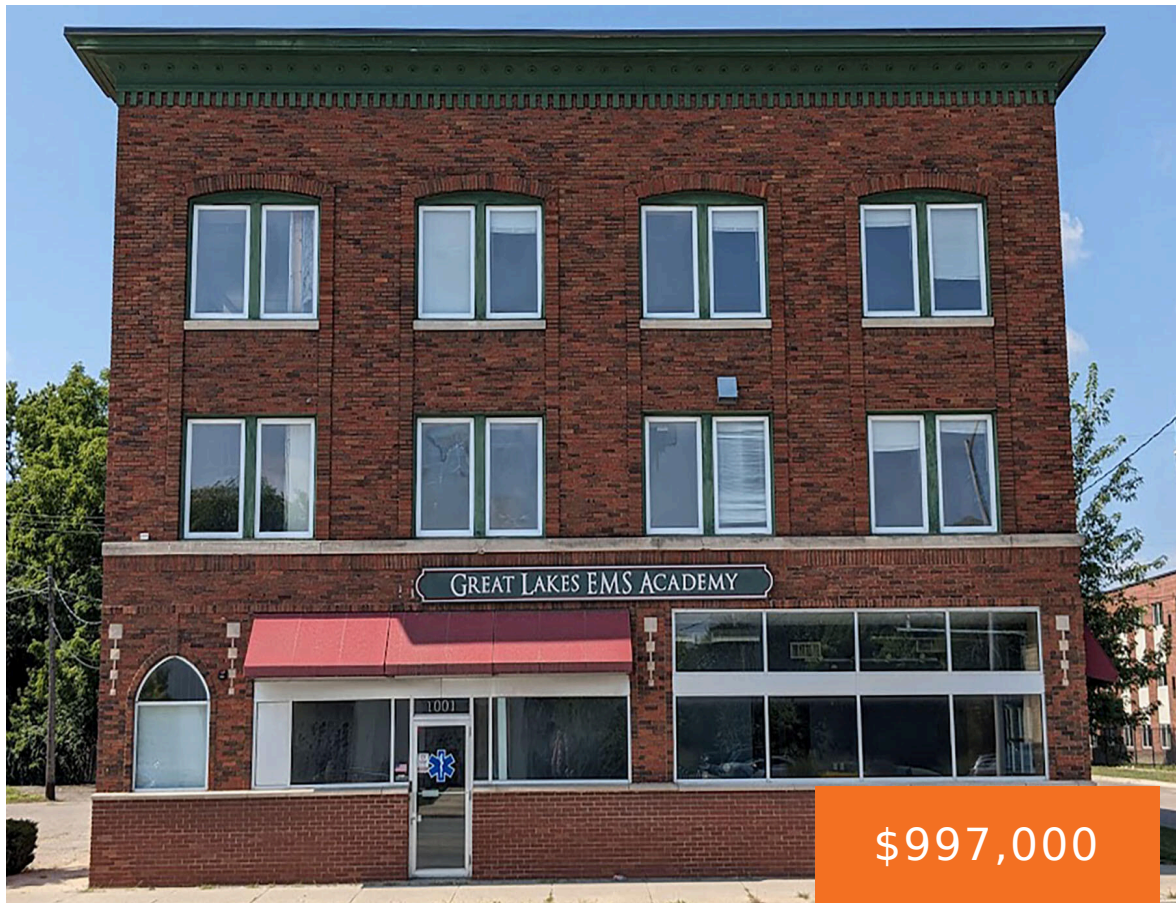


1001, DIVISION, GRAND RAPIDS, MI, 49507  
https://tuckerbenner.com



Built in 1930 and renovated in the 2009, this building has ample parking and great frontage on busy division avenue. Building sits on just over half an acre. The TN-TBA zoning allows for many potential uses including live-work facility, multi-family, community center, medical, rehab facilities, churches, schools and much more.

- 1 bath
- Office
- Commercial Sale
- Active



Basics

**Category:** Commercial Sale

**Status:** Active

**Lot size:** 0.51 sq ft

**Bathrooms Full:** 1

**Business Type:** Professional/Office

**Type:** Office

**Bathrooms:** 1 bath

**Year built:** 1930

**Lot Size Acres:** 0.51 acres

**County:** Kent

Call us now



Phone: (231)730-8781  
Email: tuckerbennerteam@gmail.com  
Address: 2747 Lakeshore Drive, Twin Lake, MI 49457



# Building Details

**Building Area Total:** 9696 sq ft

**Construction Materials:** Brick

**Heating:** Forced Air

**Roof:** Rubber

**Basement:** Partial

**Number Of Units Total:** 1

**Sewer:** Public Sewer

**StoriesTotal:** 3

**Number Of Buildings:** 1

# Amenities & Features

**Inclusions:** Non-Applicable

**Utilities:** Phone Available, Water Available, Sewer Available, Natural Gas Available, Electricity Available, Cable Available, Phone Connected, Natural Gas Connected, Electricity Connected, Cable Connected

**WaterSource:** Public

**Cooling:** Central Air

# Fees & Taxes

**Tax Assessed Value:** \$366,240

**Tax Year:** 2024

**Tax Annual Amount:** \$18,830

# School Information

**High School District:** Grand Rapids

# Miscellaneous

**CrossStreet:** Hall & Division

**Listing Terms:** Conventional, Cash

Call us now