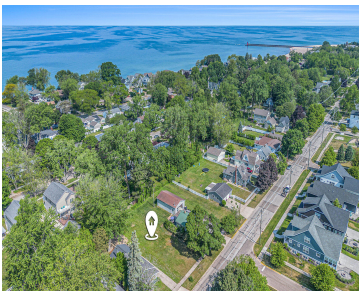


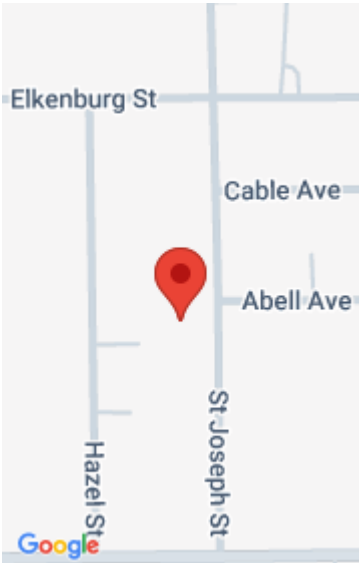
1006, ST JOSEPH, SOUTH HAVEN, MI, 49090

https://tuckerbenner.com



Live your lifestyle in the heart of South Haven. This prime 50×147 vacant lot offers the perfect opportunity to build your own private oasis in one of Michigan’s most beloved resort towns. Take full advantage of Pure Michigan trails, parks, seven public beaches, and multiple marinas—all just minutes away. Located just blocks from downtown, Kids [...]

- 0 baths
- Lot
- Land
- Active



Basics

Category: Land

Status: Active

Lot size: 7234 sq ft

County: Van Buren

Type: Lot

Bathrooms: 0 baths

Lot Size Acres: 0.17 acres

Building Details

Sewer: Public Sewer

Current Use: Residential

Amenities & Features

Utilities: Natural Gas Available, Electricity Available, Cable Available, Phone Available, Storm Sewer, None

Waterfront Features: Lake

WaterSource: Public

Lot Features: Buildable, Sidewalk

Fees & Taxes

Tax Assessed Value: \$38,765

Tax Year: 2025

Tax Annual Amount: \$2,463

School Information

High School District: South Haven

Miscellaneous

Call us now

Road Surface Type: Paved

CrossStreet: St Joseph St & Abell Ave

Listing Terms: Cash, Conventional

Call us now



Phone: (231)730-8781
Email: tuckerbennerteam@gmail.com
Address: 2747 Lakeshore Drive, Twin Lake, MI 49457

