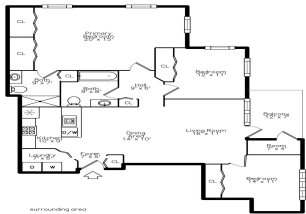


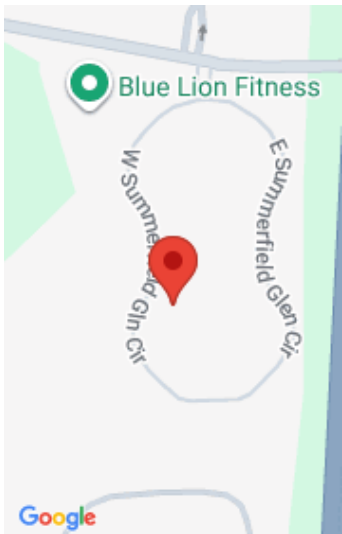
1008, SUMMERFIELD GLEN, ANN ARBOR, MI, 48103

<https://tuckerbenner.com>



Delightful move-in ready 3-bed 2 bath condo. Step into this inviting main-level unit offering an easy, stair-free lifestyle and bright open floorplan. Enjoy the elevated screened-in porch with new deck boards—an ideal spot for morning coffee or evening relaxation. This spacious unit includes a valuable bonus: a 3rd bedroom or dedicated home office, rarely found [...]

- 3 beds
- 2 baths
- Condominium
- Residential Lease
- Active
- 1385 sq ft



Call us now



Phone: (231)730-8781

Email: tuckerbennerteam@gmail.com

Address: 2747 Lakeshore Drive, Twin Lake, MI 49457



Basics

Category: Residential Lease
Status: Active
Bathrooms: 2 baths
Year built: 2013
Bathrooms Full: 2
Rooms Total: 9

Type: Condominium
Bedrooms: 3 beds
Area: 1385 sq ft
Subdivision Name: Summerfield Glen
Lot Size Acres: 0 acres
County: Washtenaw

Building Details

Architectural Style: Ranch
Stories: 1

Heating: Forced Air
Basement: Slab

Amenities & Features

Laundry Features: Electric Dryer Hookup, In Unit, Laundry Room, Main Level, Washer Hookup
Garage Spaces: 1

Parking Features: Detached
Cooling: CeilingFan, Central Air

Fees & Taxes

Tax Year: 1 **Association Fee Includes:** Sewer, Snow Removal, Water

School Information

High School District: Ann Arbor
Middle Or Junior School: Slauson Middle School

HighSchool: Pioneer High School
Elementary School: Lakewood Elementary School

Call us now

Miscellaneous

CrossStreet: Liberty & Scio Church

Owner Pays: Association Fees, Trash,
Sewer, Snow Removal, Taxes, Water

Tenant Pays: A/C, Cable/Satellite, Electric, Heat,
Internet Access, WIFI

Call us now



Phone: (231)730-8781
Email: tuckerbennerteam@gmail.com
Address: 2747 Lakeshore Drive, Twin Lake, MI 49457

