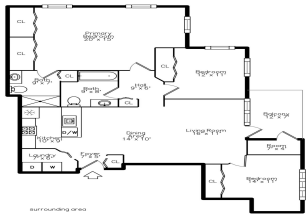


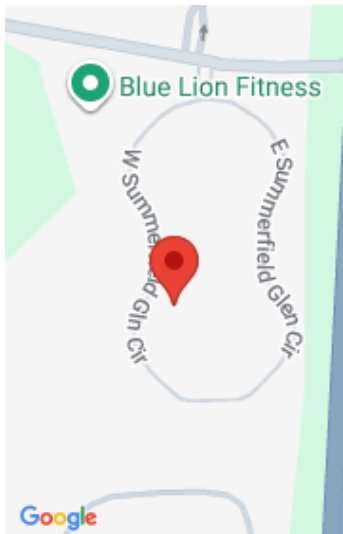
1008, SUMMERFIELD GLEN, ANN ARBOR, MI, 48103

<https://tuckerbenner.com>



Delightful move-in ready 3-bed 2 bath condo. Step into this inviting main-level unit offering an easy, stair-free lifestyle and bright open floorplan. Enjoy the elevated screened-in porch with new deck boards—an ideal spot for morning coffee or evening relaxation. This spacious unit includes a valuable bonus: a 3rd bedroom or dedicated home office, rarely found [...]

- 3 beds
- 2 baths
- Condominium
- Residential
- Active
- 1385 sq ft



Call us now



Phone: (231)730-8781

Email: tuckerbennerteam@gmail.com

Address: 2747 Lakeshore Drive, Twin Lake, MI 49457



Basics

Category: Residential
Status: Active
Bathrooms: 2 baths
Lot size: 0 sq ft
Subdivision Name: Summerfield Glen
Lot Size Acres: 0 acres
County: Washtenaw

Type: Condominium
Bedrooms: 3 beds
Area: 1385 sq ft
Year built: 2013
Bathrooms Full: 2
Rooms Total: 7

Building Details

Building Area Total: 1385 sq ft
Architectural Style: Ranch
Heating: Forced Air
Roof: Asphalt

Construction Materials: Brick
Sewer: Public
Stories: 1
Basement: Slab

Amenities & Features

Laundry Features: Electric Dryer Hookup, Laundry Room, Main Level, Washer Hookup
Utilities: Natural Gas Connected, Cable Connected, Storm Sewer, High-Speed Internet
Parking Features: Detached
WaterSource: Public

Interior Features: Ceiling Fan(s)
Window Features: Screens, Window Treatments
Cooling: Central Air

Flooring: Carpet, Vinyl, Wood
Association Amenities: Pets Allowed

Garage Spaces: 1
Appliances: Dishwasher, Disposal, Dryer, Microwave, Oven, Range, Refrigerator, Washer
Lot Features: Sidewalk
Exterior Features: Scrn Porch

Call us now

Fees & Taxes

Tax Assessed Value: \$121,245

Association Fee Frequency: Monthly

Association Fee: \$335

Tax Year: 2025

Tax Annual Amount: \$4,360

Association Fee Includes: Water, Trash, Snow Removal, Sewer, Lawn/Yard Care

School Information

High School District: Ann Arbor

HighSchool: Pioneer High School

Middle Or Junior School: Slauson Middle School

Elementary School: Lakewood Elementary School


Miscellaneous

Road Surface Type: Paved

CrossStreet: E of Wagner, S of Liberty

Listing Terms: Cash, Conventional

Call us now



Phone: (231)730-8781

Email: tuckerbennerteam@gmail.com

Address: 2747 Lakeshore Drive, Twin Lake, MI 49457

