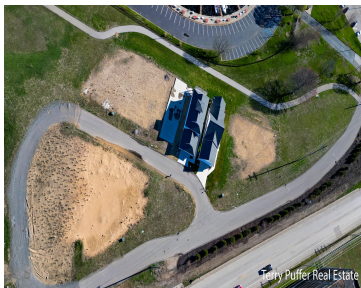
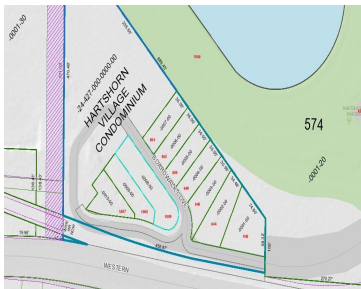


1009, BOARDWALK COVE, MUSKEGON, MI, 49441

<https://tuckerbenner.com>



Discover the perfect canvas for your vision with this water facing buildable lot. Ideal for builders and developers seeking an exceptional investment opportunity, or a buyer looking to build their dream home in a great location. This parcel promises endless possibilities in a highly sought-after location, nestled between the prestigious Hartshorn Marina and the prestigious [...]

- 0 baths
- Acreage
- Land
- Active



Call us now

Basics

Category: Land

Type: Acreage

Status: Active

Bathrooms: 0 baths

Lot size: 0.04 sq ft

Lot Size Acres: 0.04 acres

County: Muskegon

Amenities & Features

Utilities: Public Water Connected, Public Sewer Connected, Natural Gas Connected, Electric Connected, Phone Available, Cable Available, Broadband Available

Waterfront Features: All Sports, Assoc Access, Shared Frontage

Lot Features: Level, Buildable, Cleared, Cul-De-Sac, Sidewalk

Fees & Taxes

Tax Assessed Value: \$12,500

Tax Year: 2023

Tax Annual Amount: \$786

School Information

High School District: Muskegon

Miscellaneous

CrossStreet: Western & Division

Listing Terms: Cash, Conventional

Call us now



Phone: (231)730-8781

Email: tuckerbennerteam@gmail.com

Address: 2747 Lakeshore Drive, Twin Lake, MI 49457

