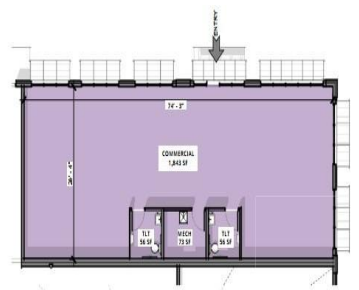
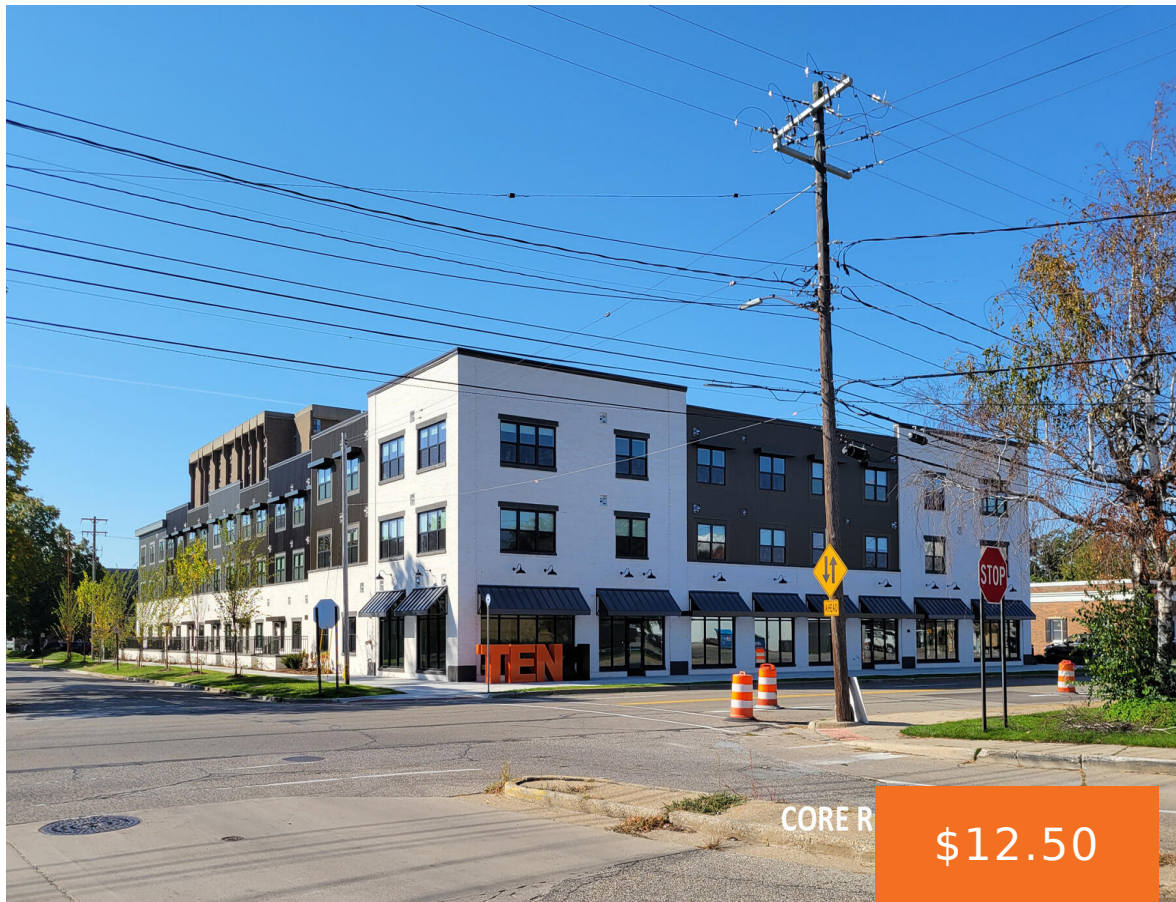


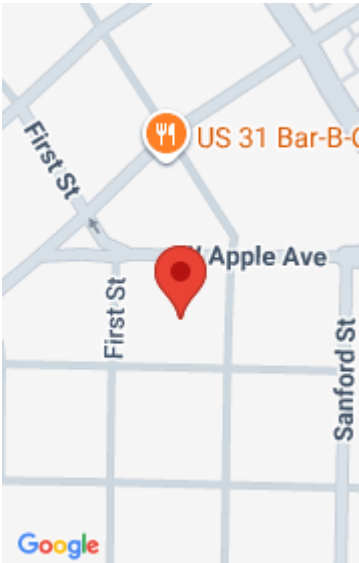
1021, JEFFERSON, MUSKEGON, MI, 49440

https://tuckerbenner.com



Newer construction commercial space available within a mixed-use, multi-story building in downtown Muskegon. Situated within the busy Apple Ave. corridor in proximity to the Muskegon County administrative complex. Walking distance to downtown restaurants and events. Street level space would be an excellent location for legal services or professional office user, or a street retail operation. [...]

- 0 baths
- Office
- Commercial Lease
- Active



Call us now

Phone: (231)730-8781  
Email: tuckerbennerteam@gmail.com  
Address: 2747 Lakeshore Drive, Twin Lake, MI 49457

# Basics

**Category:** Commercial Lease

**Status:** Active

**Lot size:** 1.24 sq ft

**Lot Size Acres:** 1.24 acres

**County:** Muskegon

**Type:** Office

**Bathrooms:** 0 baths

**Year built:** 2021

**Business Type:** Professional/Office, Retail

# Building Details

**Building Area Total:** 80700 sq ft

**Sewer:** Public Sewer

**Roof:** Rubber

**Construction Materials:** Brick, Stone

**Heating:** Forced Air

**Number Of Buildings:** 1

# Amenities & Features

**Utilities:** Natural Gas Available, Electricity Available, Natural Gas Connected, Electricity Connected, Water Available, Sewer Available, Storm Sewer

**WaterSource:** Public

**Fireplaces Total:** 1

# Fees & Taxes

**Tax Year:** 2024

# School Information

**High School District:** Muskegon

Call us now

# Miscellaneous

**Road Surface Type:** Paved

**CrossStreet:** First & Jefferson

**Call us now**



Phone: (231)730-8781  
Email: tuckerbennerteam@gmail.com  
Address: 2747 Lakeshore Drive, Twin Lake, MI 49457

