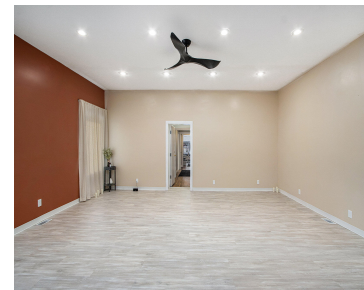


# 105, KALAMAZOO, PAW PAW, MI, 49079

<https://tuckerbenner.com>



\$1750/m Welcome to a spot that's practically the town's pride and joy- prime frontage with windows so attractive they're basically the Kardashians of Paw Paw's four corners! This gem is up for grabs, whether you're into retail therapy or you're a white-collar superhero in disguise. Currently, it's a yoga studio, where people bend, stretch, and [...]

- 0 baths
- Retail/Commercial
- Commercial Lease
- Active



## Basics

**Category:** Commercial Lease **Type:** Retail/Commercial

**Status:** Active

**Bathrooms:** 0 baths

**Lot size:** 0.02 sq ft

**Year built:** 1860

**Lot Size Acres:** 0.02 acres

**Business Type:** Professional Service, Professional/Office, Retail

**County:** Van Buren



### Call us now

Phone: (231)730-8781

Email: [tuckerbennerteam@gmail.com](mailto:tuckerbennerteam@gmail.com)

Address: 2747 Lakeshore Drive, Twin Lake, MI 49457



---

## Building Details

**Building Area Total:** 1250 sq ft

**Sewer:** Public Sewer

**Number Of Buildings:** 1

**Construction Materials:** Brick

**Roof:** Composition

---

## Amenities & Features

**Utilities:** Phone Connected, Natural Gas Connected, Electric Connected, Cable Connected

**WaterSource:** Public

**Parking Features:** Paved

**Fireplaces Total:** 1

---

## School Information

**High School District:** Paw Paw

---

## Miscellaneous

**Road Surface Type:** Paved

**CrossStreet:** Red Arrow and Oakk

**Tenant Pays:** Electricity, Trash Collection, Water, Sewer, Gas



### Call us now

Phone: (231)730-8781

Email: tuckerbennerteam@gmail.com

Address: 2747 Lakeshore Drive, Twin Lake, MI 49457

