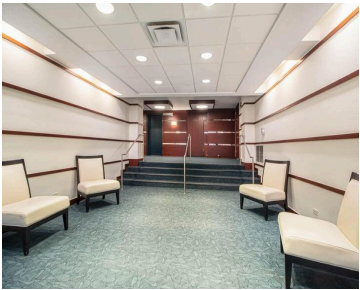


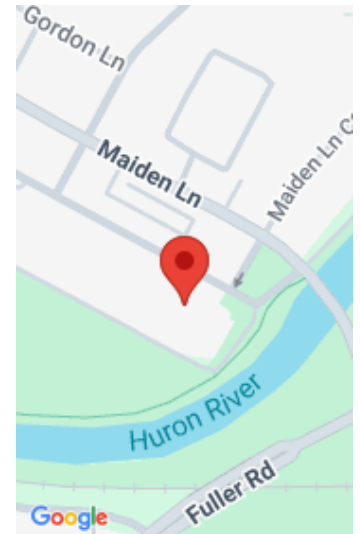
1050, WALL, ANN ARBOR, MI, 48105

<https://tuckerbenner.com>



Welcome to this warm, light-filled 2 bedroom, 2 bath condo at Riverside Park Place! It has brand new carpeting and is move-in ready! It is perfectly located on the Huron River along the Border-to-Border trail, a short walk to UM Medical Center, next door to Kellogg Eye Center and close to UM campus, Kerrytown and [...]

- 2 beds
- 2 baths
- Condominium
- Residential
- Active
- 1182 sq ft



Basics

Category: Residential

Status: Active

Bathrooms: 2 baths

Lot size: 0 sq ft

Bathrooms Full: 2

Rooms Total: 7

Type: Condominium

Bedrooms: 2 beds

Area: 1182 sq ft

Year built: 1966

Lot Size Acres: 0 acres

County: Washtenaw

Building Details

Building Area Total: 1182 sq ft

Architectural Style: Ranch

Heating: Baseboard

Basement: Slab

Construction Materials: Brick

Sewer: Public

Stories: 1

Amenities & Features

Laundry Features: Common Area

Utilities: Phone Available, Cable Connected, High-Speed Internet

Parking Features: Garage Door Opener, Converted Garage, Attached

WaterSource: Public

Interior Features: Garage Door Opener

Window Features: Window Treatments

Cooling: Wall Unit(s)

Flooring: Carpet, Tile, Vinyl

Association Amenities: Laundry, Meeting Room, Pets Allowed, Pool, Storage

Garage Spaces: 1

Appliances: Dishwasher, Disposal, Dryer, Microwave, Oven, Range, Refrigerator

Lot Features: Adj to Public Land

Exterior Features: Balcony

Fees & Taxes

Call us now



Tax Assessed Value: \$173,500

Association Fee: \$597

Tax Annual Amount: \$9,182

Association Fee Frequency: Monthly

Tax Year: 2025

Association Fee Includes: Water, Trash, Snow Removal, Sewer, Lawn/Yard Care

School Information

High School District: Ann Arbor

HighSchool: Skyline High School

Middle Or Junior School: Clague Middle School

Elementary School: Northside Elementary School

Miscellaneous

Road Surface Type: Paved

CrossStreet: Wall and Broadway

Listing Terms: Cash, Conventional

Call us now



Phone: (231)730-8781

Email: tuckerbennerteam@gmail.com

Address: 2747 Lakeshore Drive, Twin Lake, MI 49457

