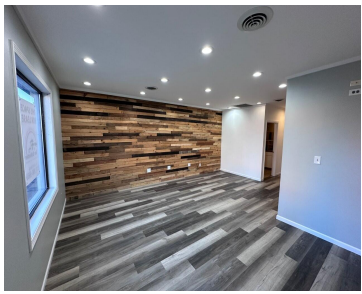


106, MAIN, BROOKLYN, MI, 49230

https://tuckerbenner.com



\$18.26



Updated prime office and retail space located in Columbia Township, in the Village of Brooklyn and on the corner on S Main Street. This office, retail and mixed use office space is one of a kind and ready for your use today. This suite offers a reception/office area, storage room/work room and 1 half bathrooms [...]

- 0 baths
- Office
- Commercial Lease
- Active



Basics

Category: Commercial Lease

Status: Active

Lot size: 0.34 sq ft

Subdivision Name: None

Business Type: Restaurant, Professional Service, Professional/Office, Retail, Recreation

Type: Office

Bathrooms: 0 baths

Year built: 1992

Lot Size Acres: 0.34 acres

County: Jackson



Call us now

Phone: (231)730-8781

Email: tuckerbennerteam@gmail.com

Address: 2747 Lakeshore Drive, Twin Lake, MI 49457



Building Details

Building Area Total: 800 sq ft

Heating: Forced Air

Foundation Details: Slab

Sewer: Public Sewer

Building Features: Barrier Free

Number Of Buildings: 1

Amenities & Features

Utilities: Phone Available, Cable Available, Phone Connected, Natural Gas **WaterSource:** Public Connected, Electricity Connected, Cable Connected, Water Available, Sewer Available, Broadband

Fireplaces Total: 1

Fees & Taxes

Tax Assessed Value: \$119,700

Tax Year: 2024

School Information

High School District: Columbia

Miscellaneous

Road Surface Type: Paved

CrossStreet: Corner of S Main & Chicago St

Tenant Pays: Electricity, Gas



Call us now

Phone: (231)730-8781

Email: tuckerbennerteam@gmail.com

Address: 2747 Lakeshore Drive, Twin Lake, MI 49457

