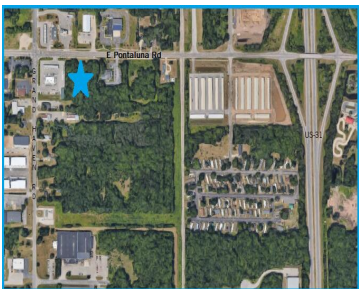


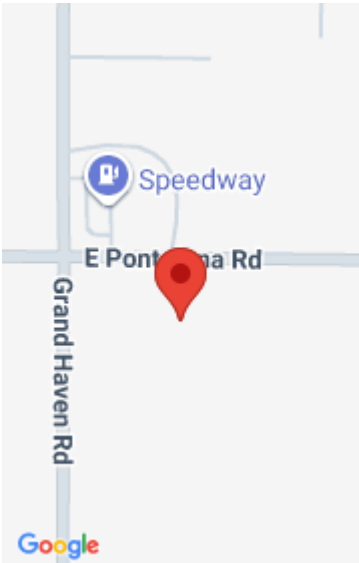
1061, PONTALUNA, NORTON SHORES, MI, 49456

https://tuckerbenner.com




This 2.12-acre commercial parcel is located in a developing corridor just ½ mile west of US-31 in Norton Shores. This high-traffic corridor includes neighboring businesses such as Wesco, Dollar General, and Speedway, with Menards, Target, and The Lakes Mall nearby. The site is also in close proximity to area industrial parks and recreational attractions including [...]

- 0 baths
- Commercial Land
- Land
- Active




Call us now



Phone: (231)730-8781

Email: tuckerbennerteam@gmail.com

Address: 2747 Lakeshore Drive, Twin Lake, MI 49457



Basics

Category: Land
Status: Active
Lot size: 1.92 sq ft
County: Muskegon

Type: Commercial Land
Bathrooms: 0 baths
Lot Size Acres: 1.92 acres

Amenities & Features

Utilities: Natural Gas Available, Electricity Available, Cable Available, Phone Available, None

Lot Features: Level, Buildable, Wooded

Fees & Taxes

Tax Assessed Value: \$100,956
Tax Annual Amount: \$5,318.33

Tax Year: 2025

School Information

High School District: Grand Haven

Miscellaneous

Road Surface Type: Paved
Listing Terms: Cash, Conventional

CrossStreet: Grand Haven Rd & US-31

Call us now