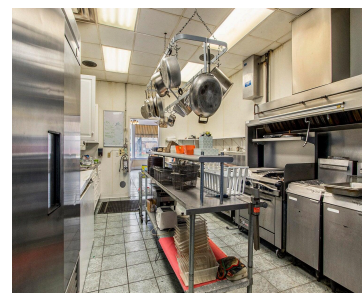
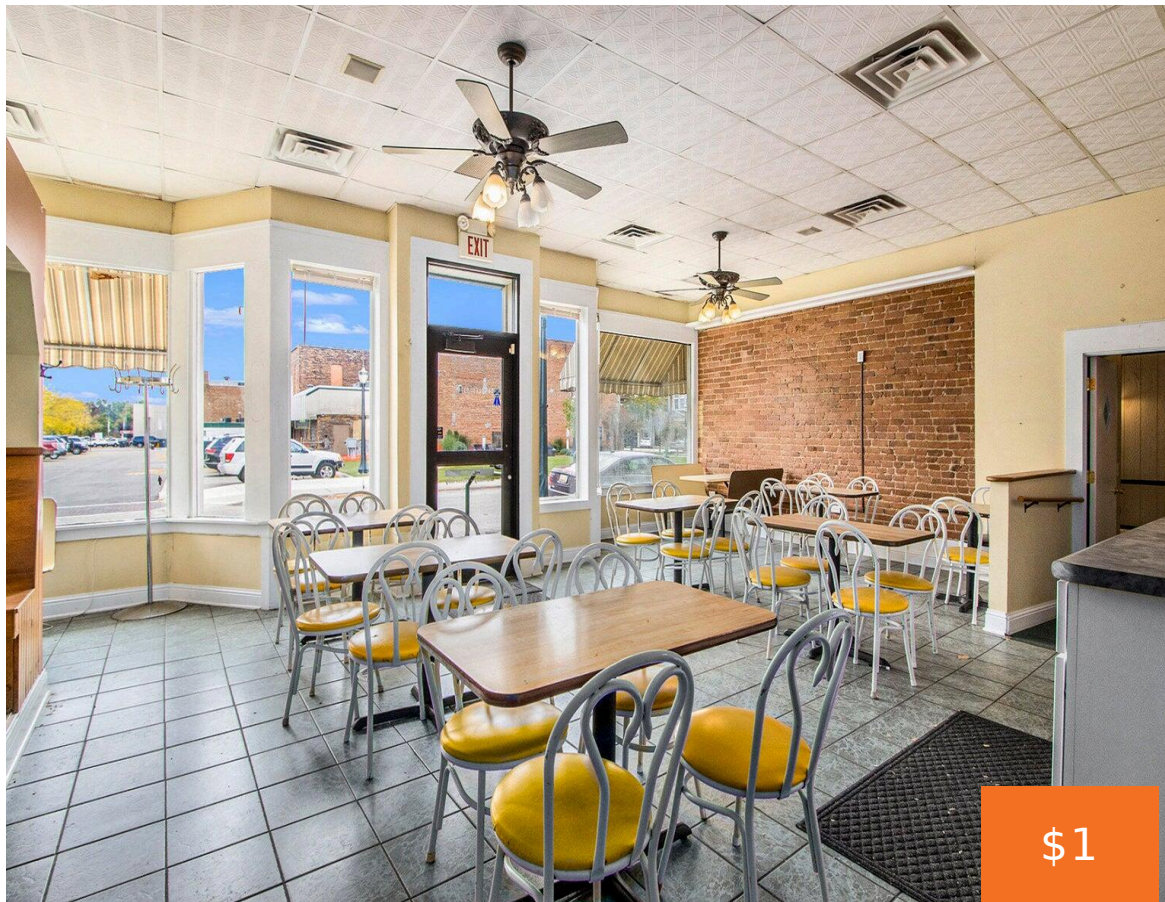


107, BEESON, DOWAGIAC, MI, 49047

<https://tuckerbenner.com>



Dowagiac needs you! The town is calling for a breakfast and lunch cafe. This turn key business is ready for you to move in and start cooking your favorite recipes. Seating for 60, kitchen equipped with grill, range, oven refrigerators, freezers, fryers, walk in cooler, lots of storage and office space. Looking for experience business [...]

- 0 baths
- Retail/Commercial
- Commercial Lease
- Active



Basics

Category: Commercial Lease

Status: Active

Lot size: 2792 sq ft

Lot Size Acres: 2792 acres

County: Cass

Type: Retail/Commercial

Bathrooms: 0 baths

Year built: 1900

Business Type: Restaurant



Call us now

Phone: (231)730-8781

Email: tuckerbennerteam@gmail.com

Address: 2747 Lakeshore Drive, Twin Lake, MI 49457



Building Details

Building Area Total: 1200 sq ft

Sewer: Public Sewer

Roof: Rubber

Number Of Buildings: 1

Construction Materials: Concrete

Heating: Forced Air

Foundation Details: None

Basement: Partial

Amenities & Features

Utilities: Phone Available, Water Available, Sewer Available, Natural Gas Available, Electricity Available, Cable Available, Natural Gas Connected, Electricity Connected, Cable Connected, Storm Sewer

Fireplaces Total: 1

WaterSource: Public

Cooling: Central Air

School Information

High School District: Dowagiac

Miscellaneous

CrossStreet: Beeson & Depot **Tenant Pays:** Electricity, Taxes, Trash Collection, Water, Sewer, Gas, Building Insurance



Call us now

Phone: (231)730-8781

Email: tuckerbennerteam@gmail.com

Address: 2747 Lakeshore Drive, Twin Lake, MI 49457

