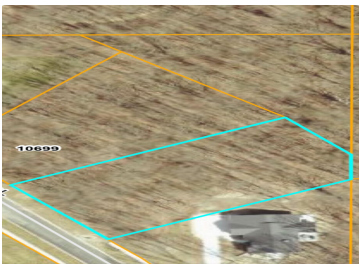


10711, MYSTIC HEIGHTS, MATTAWAN, MI, 49071
https://tuckerbenner.com

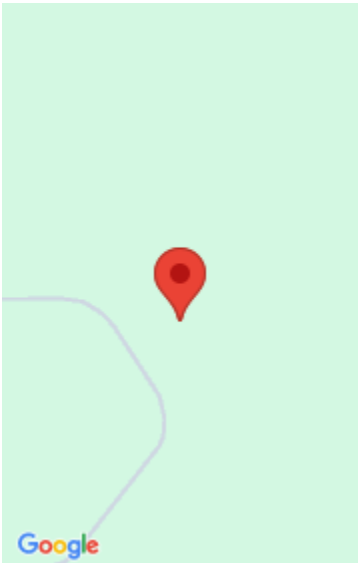


\$120,000



Nestled in peaceful Mystic Heights subdivision, this oversized parcel awaits your dream build-ready to go with utilities nearby

- 0 baths
- Lot
- Land
- Active



Call us now

Phone: (231)730-8781
Email: tuckerbennerteam@gmail.com
Address: 2747 Lakeshore Drive, Twin Lake, MI 49457



Basics

Category: Land
Status: Active
Lot size: 0.93 sq ft
Lot Size Acres: 0.93 acres

Type: Lot
Bathrooms: 0 baths
Subdivision Name: Mystic Heights
County: Kalamazoo

Amenities & Features

Utilities: Natural Gas Available, Electricity Available, Storm Sewer, None
Lot Features: Rolling Hills, Site Condo, Buildable, Wooded

Fees & Taxes

Tax Assessed Value: \$40,000
Association Fee: \$150
Tax Annual Amount: \$2,548.36
Association Fee Frequency: Annually
Tax Year: 2025

School Information

High School District: Mattawan

Miscellaneous

Road Surface Type: Paved
Listing Terms: Cash, Conventional
CrossStreet: Van Kal

Call us now