

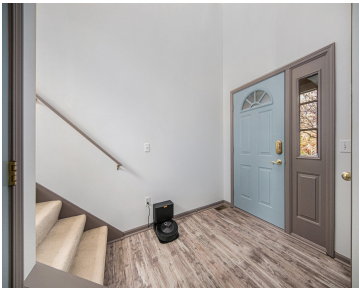
109, VILLAGE PLACE, CHELSEA, MI, 48118

<https://tuckerbenner.com>

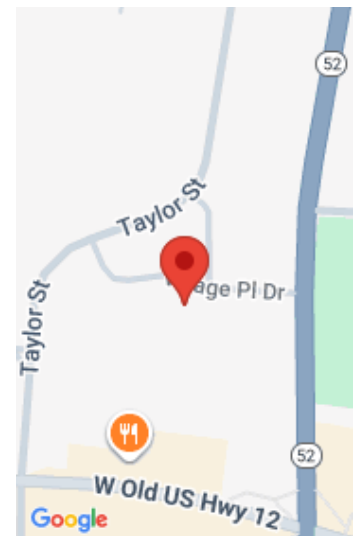


\$365,000

Welcome to 109 Village Place, a beautifully updated condo in the heart of Chelsea, Michigan. This spacious home features 3 bedrooms, 2.5 bathrooms, including a primary suite, and 1,740 finished square feet, with an additional 400 square feet of partially finished space in the basement. One of the rare units, it offers a serene view [...]



- 3 beds
- 3 baths
- Condominium
- Residential
- Active
- 2140 sq ft



Call us now



Phone: (231)730-8781

Email: tuckerbennerteam@gmail.com

Address: 2747 Lakeshore Drive, Twin Lake, MI 49457



Basics

Category: Residential
Status: Active
Bathrooms: 3 baths
Lot size: 0 sq ft
Subdivision Name: Village Place Condos
Lot Size Acres: 0 acres
County: Washtenaw

Type: Condominium
Bedrooms: 3 beds
Area: 2140 sq ft
Year built: 1997
Bathrooms Full: 2
Rooms Total: 7
Bathrooms Half: 1

Building Details

Building Area Total: 1740 sq ft
Architectural Style: Contemporary
Heating: Forced Air
Basement: Full

Construction Materials: Brick, Vinyl Siding
Sewer: Public Sewer
Stories: 2

Amenities & Features

Laundry Features: Laundry Room, Main Level
Parking Features: Attached
Garage Spaces: 2
Appliances: Refrigerator, Range, Oven, Microwave, Dishwasher
Exterior Features: Porch(es), Deck(s)
Cooling: Central Air

Utilities: Natural Gas Available, Public Water, Public Sewer
Fireplace Features: Family Room
WaterSource: Public
Lot Features: Sidewalk, Site Condo
Fireplaces Total: 1

Fees & Taxes

Call us now

Tax Assessed Value: \$166,100 **Association Fee Frequency:** Monthly
Association Fee: \$330 **Tax Year:** 24
Tax Annual Amount: \$8,006.78 **Association Fee Includes:** Snow Removal, Lawn/Yard Care

School Information

High School District: Chelsea

Miscellaneous

Road Surface Type: Paved **CrossStreet:** Village Place Dr & Main Street
Listing Terms: Cash, Conventional

Call us now