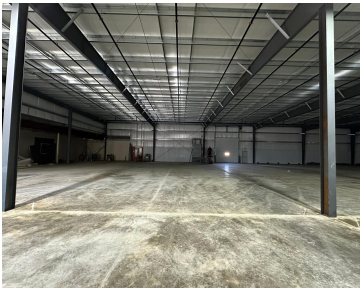
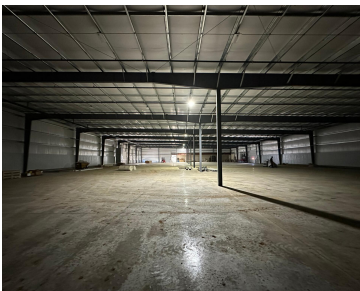


1100, MAIN, THREE RIVERS, MI, 49093

https://tuckerbenner.com



\$9.58

Brand new 49,500 SF industrial facility in a newly redeveloped commercial center. This modern space features four dock-high doors, two overhead doors, and a state-of-the-art Thermo-Cycler HVAC system designed for efficient climate control. The building is ideal for manufacturing, distribution, or warehousing operations, with a large newly constructed parking lot offering ample space for employees [...]

- 0 baths
- Industrial
- Commercial Lease
- Active



Call us now

Phone: (231)730-8781
Email: tuckerbennerteam@gmail.com
Address: 2747 Lakeshore Drive, Twin Lake, MI 49457

Basics

Category: Commercial Lease

Type: Industrial

Status: Active

Bathrooms: 0 baths

Lot size: 0.47 sq ft

Year built: 2024

Lot Size Acres: 0.47 acres

Business Type: Professional/Office, Storage, Manufacturing

County: St. Joseph

Building Details

Building Area Total: 49500 sq ft

Heating: Forced Air

Number Of Buildings: 1

Amenities & Features

Utilities: Phone Available, Natural Gas Available, Electricity Available, Cable Available, Phone Connected, Natural Gas Connected, Electricity Connected

Fireplaces Total: 1

Cooling: Central Air

School Information

High School District: Three Rivers

Miscellaneous

CrossStreet: N. Main & -

Call us now