

111, FIELDCREST, ANN ARBOR, MI, 48103

https://tuckerbenner.com



\$1,595

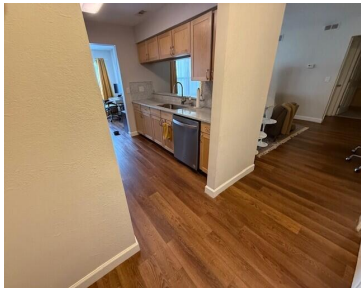
FOR RENT – Woodland Mews Condo! This is the one you’ve been waiting for! A beautifully maintained and tastefully updated Woodland Mews condo featuring: Spacious bedroom with a bonus study nook Open-concept living room and dining alcove with walkout to a covered patio Modern kitchen with updated finishes Handicap-accessible bathroom In-unit washer and dryer for [...]

PRIME
PROPERTY MANAGEMENT

Feel right at home with our **resident benefits package.**

- Filter Delivery Service** – Choosing items to deliver is so important. This service helps you save up to \$10000 on the delivery of your items.
- Resident Insurance Program** – We've secured the industry leading rate policy from an A-rated carrier. You'll benefit from the lowest rates in the industry. (2023-2024) and your coverage is guaranteed for the next 10 years.
- Resident Rewards Program** – Every day is now rewards day. You'll get credit, gift cards, and exclusive discounts on everything you need for your home.
- Credit Building** – We report every on-time payment to your credit score. Average increases of 25 to 42 points in credit scores. You can report up to 1000 points in credit score.
- Move-In Concierge** – We take care of all the details, and help you get the best prices on all the items you need.
- Our On-Demand Pest Control** – Pest services, powered by Pest Services, is targeted and effective pest control for you.
- Online Portal** – Access your documents and pay rent through our easy-to-use online portal.
- 24/7 Maintenance Coordination** – A handyman like yours doesn't often have this. Modern reporting tools and a dedicated team to help you get the most out of your home.
- Verified Vendor Network** – Everyone who services your home is connected to avoid the standards for the industry. We guarantee the quality of the work.
- Home Buying Assistance** – For those who want to move into homeownership, we'll help you get there.

Learn more at www.primepm.com/benefits



- 1 bed
- 1 bath
- Condominium
- Residential Lease
- Active
- 834 sq ft



Basics

Category: Residential Lease
Status: Active
Bathrooms: 1 bath
Lot size: 0 sq ft
Bathrooms Full: 1
County: Washtenaw

Type: Condominium
Bedrooms: 1 bed
Area: 834 sq ft
Year built: 1987
Lot Size Acres: 0 acres

Building Details

Heating: Forced Air

Basement: Slab

Amenities & Features

Laundry Features: In Unit

Patio And Porch Features: Patio

Parking Features: Carport

Cooling: Central Air

Fees & Taxes

Tax Year: 2 **Association Fee Includes:** Lawn/Yard Care, Sewer, Snow Removal, Trash, Water

School Information

High School District: Ann Arbor

Middle Or Junior School: Slauson Middle School

HighSchool: Pioneer High School

Elementary School: Bach Elementary School

Call us now

Miscellaneous

CrossStreet: Main/Ann Arbor Saline Rd

Owner Pays: Association Fees,
Lawn/Yard Care, Trash, Snow Removal,
Water

Tenant Pays: A/C, Cable/Satellite, Electric, Heat,
Internet Access

Call us now



Phone: (231)730-8781
Email: tuckerbennerteam@gmail.com
Address: 2747 Lakeshore Drive, Twin Lake, MI 49457

