

# 111, FIELDCREST, ANN ARBOR, MI, 48103

<https://tuckerbenner.com>



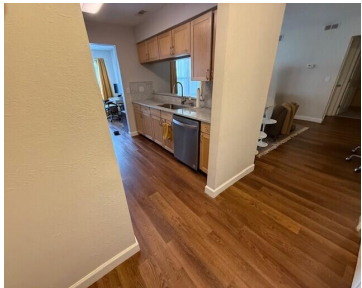
FOR RENT! This is the one you've been waiting for! Tasteful Woodland Mews condo with generously sized bedroom, study nook, open living room, and dining alcove with walkout door to the covered patio. Updated kitchen, in-unit washer and dryer and a huge bath that is handicap accessible. Second access door provides extra convenience for parking. [...]

PRIME  
PROPERTY MANAGEMENT

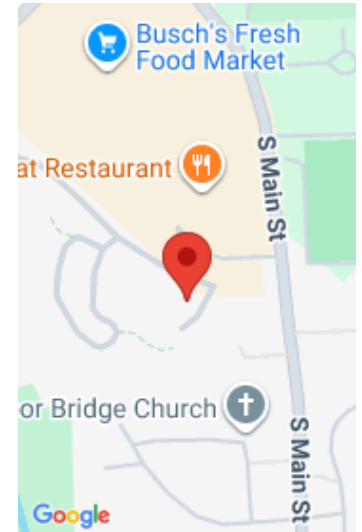
Feel right at home with our **resident benefits package**.

- Filter Delivery Service** - Changing filters is an easy job, but it's often overlooked. This service helps you save up to \$100 per year on the cost of new filters.
- Resident Insurance Program** - Don't let your renter's liability insurance lapse. We'll handle the paperwork for you, so you can sleep soundly knowing you're covered.
- Resident Rewards Program** - Earn up to \$100 in rewards every year on your rent payments. Rewards include gift cards, movie tickets, and more.
- Credit Building** - We report your rent payments to the major credit bureaus. Average increase of 25 to 40 points in credit score. You can report up to 12 months of rent payments.
- Move-In Concierge** - We offer up to 100% off on moving services and help you get the best prices on all your moving needs.
- Our Demand Pest Control** - Pest services, powered by Pest Control, is targeted and effective pest control service.
- Online Portal** - Access your documents and pay rent through our easy-to-use online portal.
- 24/7 Maintenance Coordination** - A handyman who works for you. This means reporting and scheduling maintenance issues only one phone call away.
- Verified Vendor Network** - Everyone who services your home is connected to assist our standards for exceptional customer service.
- Home Buying Assistance** - For those who want to move into homeownership, we'll help you get there.

Learn more at [www.primepm.com/residents](https://www.primepm.com/residents)



- 1 bed
- 1 bath
- Condominium
- Residential Lease
- Active
- 834 sq ft



---

## Basics

**Category:** Residential Lease

**Status:** Active

**Bathrooms:** 1 bath

**Lot size:** 0 sq ft

**Bathrooms Full:** 1

**County:** Washtenaw

**Type:** Condominium

**Bedrooms:** 1 bed

**Area:** 834 sq ft

**Year built:** 1987

**Lot Size Acres:** 0 acres

---

## Building Details

**Heating:** Forced Air

**Basement:** Slab

---

## Amenities & Features

**Laundry Features:** In Unit

**Patio And Porch Features:** Patio

**Parking Features:** Carport

**Cooling:** Central Air

---

## Fees & Taxes

**Tax Year:** 2 **Association Fee Includes:** Lawn/Yard Care, Sewer, Snow Removal, Trash, Water

---

## School Information

**High School District:** Ann Arbor

**Middle Or Junior School:** Slauson Middle School

**HighSchool:** Pioneer High School

**Elementary School:** Bach Elementary School

**Call us now**



Phone: (231)730-8781

Email: tuckerbennerteam@gmail.com

Address: 2747 Lakeshore Drive, Twin Lake, MI 49457



---

# Miscellaneous

**CrossStreet:** Main/Ann Arbor-Saline Road.

**Owner Pays:** Association Fees,  
Lawn/Yard Care, Trash, Snow Removal,  
Water

**Tenant Pays:** A/C, Cable/Satellite, Electric, Heat,  
Internet Access

## Call us now



Phone: (231)730-8781  
Email: tuckerbennerteam@gmail.com  
Address: 2747 Lakeshore Drive, Twin Lake, MI 49457

