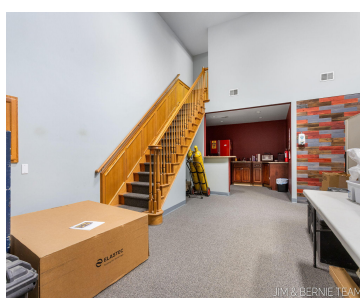


11322, LAKEWOOD, HOLLAND, MI, 49424

https://tuckerbenner.com



Great Location – just off Chicago Drive! Commercial Condo with office space. Space is currently leased, with tenant scheduled for move out around June 1. Large finished office area with restroom, kitchen area, and private office, and upstairs area. Additional 29 x 49 garage space with large overhead door for equipment storage and other uses. [...]

- 0 baths
- Industrial
- Commercial Lease
- Active

Basics

Category: Commercial Lease **Type:** Industrial
Status: Active **Bathrooms:** 0 baths
Lot size: 1.7 sq ft **Year built:** 1997
Lot Size Acres: 1.7 acres **Business Type:** Professional Service, Professional/Office, Storage
County: Ottawa

Call us now



Phone: (231)730-8781
 Email: tuckerbennerteam@gmail.com
 Address: 2747 Lakeshore Drive, Twin Lake, MI 49457



Building Details

Building Area Total: 3000 sq ft

Construction Materials: Metal Siding

Roof: Composition

Number Of Buildings: 1

Number Of Units Total: 1

Heating: Forced Air

Foundation Details: Slab

Amenities & Features

Parking Total: 4 **Utilities:** Phone Available, Natural Gas Available, Electricity Available, Cable Available, Natural Gas Connected, Electricity Connected

Fireplaces Total: 1 **Cooling:** Central Air

Fees & Taxes

Tax Assessed Value: \$49,528

Tax Year: 2025

School Information

High School District: West Ottawa

Miscellaneous

Road Surface Type: Paved

CrossStreet: 120th Ave & 112th Ave

Tenant Pays: Electric, Janitorial, Management Fee, Prop TaxesAssess, Trash, Sewer, Gas, Common Area Maintenance, Building Insurance

Call us now



Phone: (231)730-8781

Email: tuckerbennerteam@gmail.com

Address: 2747 Lakeshore Drive, Twin Lake, MI 49457

