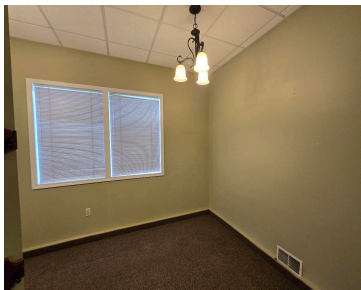
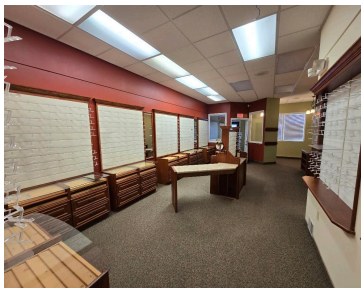
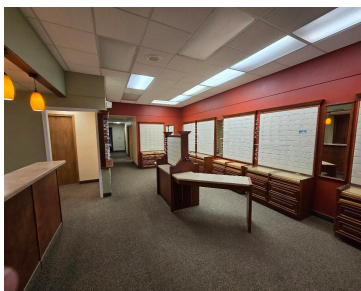


115, UPTON, REED CITY, MI, 49677

https://tuckerbenner.com



This commercial building located in downtown Reed City was remodeled inside and out in 2014 and offers 2000 square feet of finished commercial space ideal for office or retail space, an unfinished basement as well as a 12x20 garage area for addtion storage or parking. Call today for a private tour!

- 2 baths
- Office
- Commercial Sale
- Active



Call us now

Phone: (231)730-8781
Email: tuckerbennerteam@gmail.com
Address: 2747 Lakeshore Drive, Twin Lake, MI 49457

Basics

Category: Commercial Sale

Status: Active

Lot size: 0.06 sq ft

Bathrooms Full: 2

Business Type: Professional/Office, Retail

Type: Office

Bathrooms: 2 baths

Year built: 1950

Lot Size Acres: 0.06 acres

County: Osceola

Building Details

Building Area Total: 2240 sq ft

Construction Materials: Stucco, Metal Siding

StoriesTotal: 1

Foundation Details: Concrete Perimeter

Number Of Units Total: 1

Heating: Forced Air

Roof: Rubber

Number Of Buildings: 1

Amenities & Features

Inclusions: Other, Real Estate

Utilities: Phone Available, Natural Gas Available, Electricity Available, Cable Available, Phone Connected, Natural Gas Connected, Electricity Connected, Cable Connected

Interior Features: Broadband

Cooling: Central Air

Fees & Taxes

Tax Assessed Value: \$58,495

Tax Year: 2024

Tax Annual Amount: \$3,410

School Information

Call us now



High School District: Reed City

Miscellaneous

Road Surface Type: Paved

CrossStreet: Chestnut

Listing Terms: Conventional, Cash

Call us now