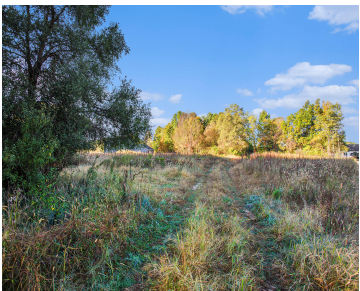


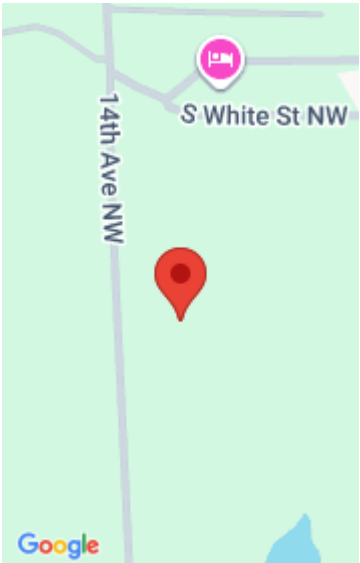
11500, 14TH, GRAND RAPIDS, MI, 49534

https://tuckerbenner.com



Bring your own builder! This 3.12 acres lot is a great opportunity for you to build your dream home. Conveniently located on the West side of Grand Rapids giving you the country vibes but only 15 mins to downtown or 10 mins to GVSU in the Grandville School District. The possibilities are endless. Call for [...]

- 0 baths
- Acreage
- Land
- Active



Basics

Category: Land

Status: Active

Lot size: 3.12 sq ft

County: Ottawa

Type: Acreage

Bathrooms: 0 baths

Lot Size Acres: 3.12 acres

Building Details

Current Use: Residential

Amenities & Features

Utilities: Well

Lot Features: Level, Buildable, Cleared

Fees & Taxes

Tax Assessed Value: \$62,500

Tax Year: 2024

School Information

High School District: Grandville

Miscellaneous

Road Surface Type: Paved

CrossStreet: Lake Michigan Dr & 14th Ave

Listing Terms: Cash, VA Loan, Conventional

Call us now