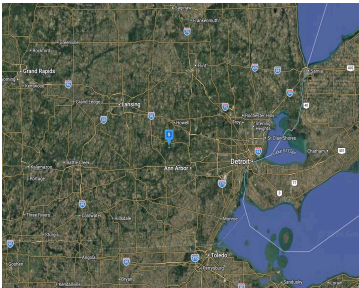
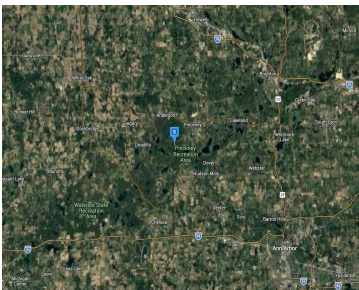
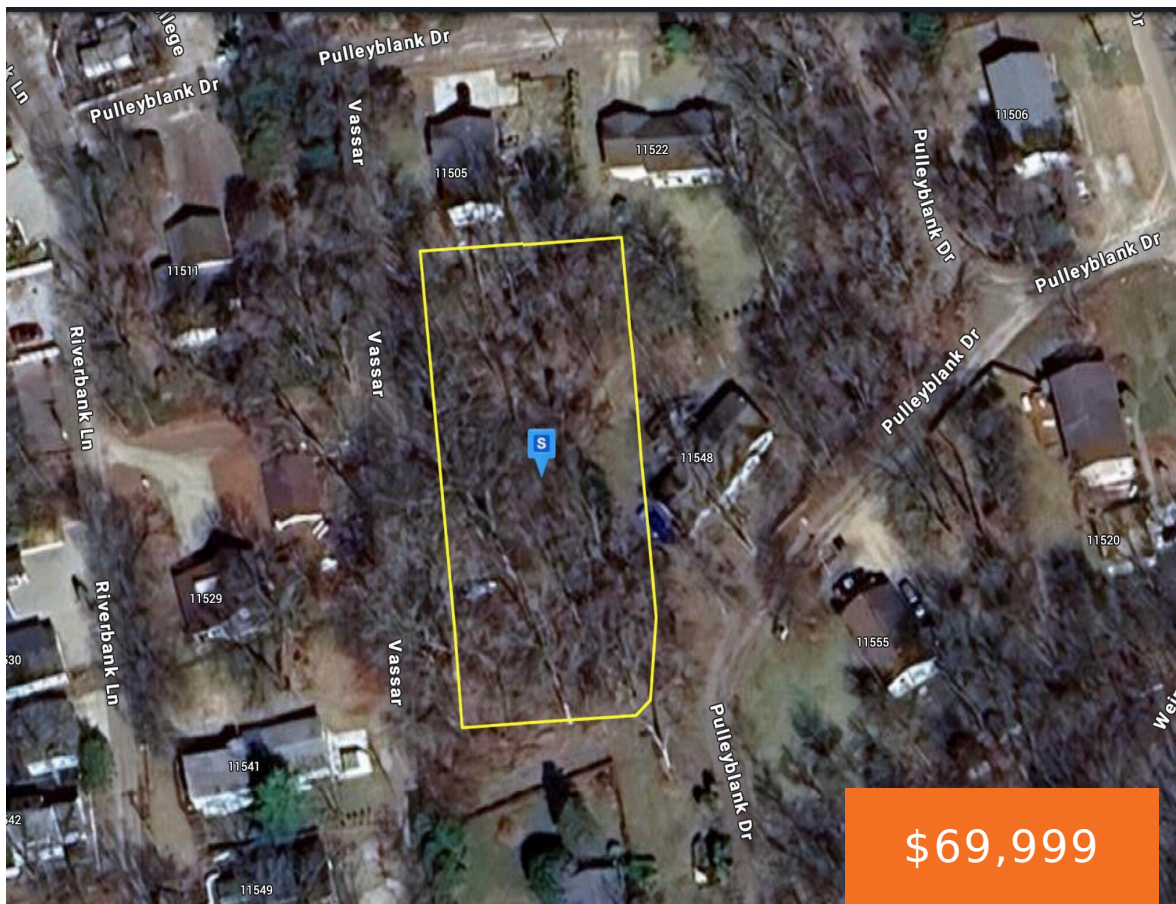


11550, PULLEYBLANK, PINCKNEY, MI, 48169

<https://tuckerbenner.com>



This 0.52-acre vacant lot in the Pickerel Point subdivision offers a wooded, private setting in a quiet neighborhood, with well and septic required. Enjoy the community's lake access point where you can launch your kayak, canoe, or tubes to explore the Chain of Lakes. The property is within walking distance to the Patowatomi Trails for [...]

- 0 baths
- Lot
- Land
- Active



Call us now



Phone: (231)730-8781
Email: tuckerbennerteam@gmail.com
Address: 2747 Lakeshore Drive, Twin Lake, MI 49457



Basics

Category: Land
Status: Active
Lot size: 0.52 sq ft
Lot Size Acres: 0.52 acres

Type: Lot
Bathrooms: 0 baths
Subdivision Name: Pickerel Point
County: Livingston

Amenities & Features

Utilities: None
Lot Features: Wooded

Waterfront Features: Lake

Fees & Taxes

Tax Assessed Value: \$37,172
Tax Annual Amount: \$1,702

Tax Year: 2025

School Information

High School District: Pinckney
Middle Or Junior School: Pathfinder School

HighSchool: Pinckney Community High School
Elementary School: Navigator Upper Elementary School

Miscellaneous

Road Surface Type: Paved
Listing Terms: Cash, Conventional

CrossStreet: Vassar

Call us now