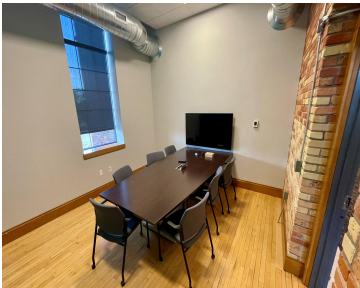
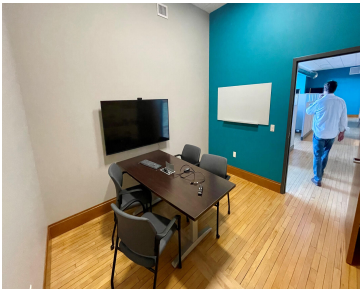


1161, SOUTHERN, MUSKEGON, MI, 49441

https://tuckerbenner.com



This amazing 34,956 sq. ft. building sits in the middle of Nim’s neighborhood. The site is a stone’s throw away from the deep water port of Muskegon Lake and just 4 miles from our pristine Pere Marquette Park on Lake Michigan. This must-see building had both a high-end and high-tech complete remodel in 2018/2019 and [...]

- 0 baths
- Office
- Commercial Lease
- Active



Basics

**Category:** Commercial Lease    **Type:** Office  
**Status:** Active    **Bathrooms:** 0 baths  
**Lot size:** 2.99 sq ft    **Year built:** 1912  
**Lot Size Acres:** 2.99 acres    **Business Type:** Professional Service, Professional/Office, Institutional  
**County:** Muskegon



**Call us now**  
Phone: (231)730-8781  
Email: tuckerbennerteam@gmail.com  
Address: 2747 Lakeshore Drive, Twin Lake, MI 49457



---

# Building Details

**Building Area Total:** 115 sq ft

**Sewer:** Public Sewer

**Roof:** Rubber

**Construction Materials:** Brick, Stone

**Heating:** Forced Air

**Number Of Buildings:** 1

---

# Amenities & Features

**Utilities:** Phone Available, Natural Gas Available, Electricity Available, Cable Available, Phone Connected, Natural Gas Connected, Electricity Connected, Cable Connected, Water Available, Sewer Available, Storm Sewer, Broadband

**WaterSource:** Public

**Fireplaces Total:** 1

**Cooling:** Central Air

---

# Fees & Taxes

**Tax Assessed Value:** \$895,520

**Tax Year:** 2024

---

# School Information

**High School District:** Muskegon

---

# Miscellaneous

**Road Surface Type:** Paved

**CrossStreet:** Barclay & Davis



## Call us now

Phone: (231)730-8781  
Email: tuckerbennerteam@gmail.com  
Address: 2747 Lakeshore Drive, Twin Lake, MI 49457

