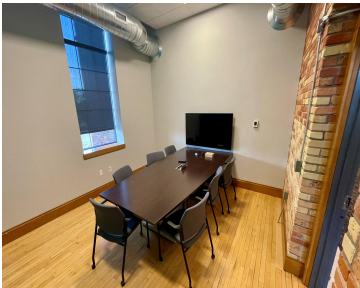
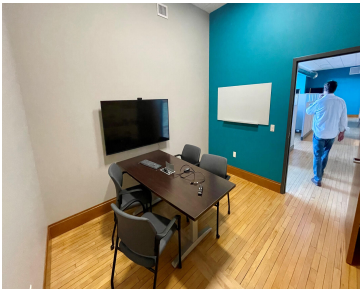


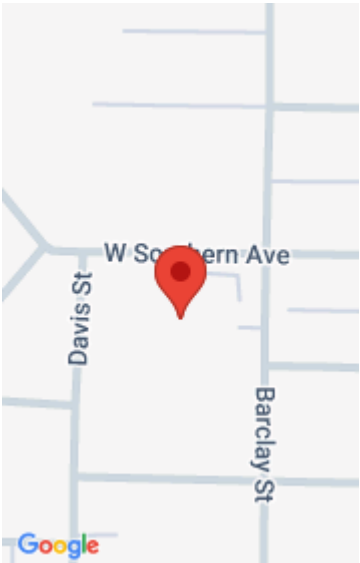
1161, SOUTHERN, MUSKEGON, MI, 49441

<https://tuckerbenner.com>



This amazing 34,956 sq. ft. building sits in the middle of Nim’s neighborhood. The site is a stone’s throw away from the deep water port of Muskegon Lake and just 4 miles from our pristine Pere Marquette Park on Lake Michigan. This must-see building had both a high-end and high-tech complete remodel in 2018/2019 and [...]

- 0 baths
- Office
- Commercial Lease
- Active



Call us now

Phone: (231)730-8781
Email: tuckerbennerteam@gmail.com
Address: 2747 Lakeshore Drive, Twin Lake, MI 49457

Basics

Category: Commercial Lease

Type: Office

Status: Active

Bathrooms: 0 baths

Lot size: 2.99 sq ft

Year built: 1912

Lot Size Acres: 2.99 acres

Business Type: Professional Service, Professional/Office, Institutional

County: Muskegon

Building Details

Building Area Total: 186 sq ft

Construction Materials: Brick, Stone

Sewer: Public Sewer

Heating: Forced Air

Roof: Rubber

Number Of Buildings: 1

Amenities & Features

Utilities: Phone Available, Natural Gas Available, Electricity Available, Cable Available, Phone Connected, Natural Gas Connected, Electricity Connected, Cable Connected, Water Available, Sewer Available, Storm Sewer, Broadband

WaterSource: Public

Fireplaces Total: 1

Cooling: Central Air

Fees & Taxes

Tax Assessed Value: \$895,520

Tax Year: 2024

School Information

High School District: Muskegon

Call us now

Miscellaneous

Road Surface Type: Paved

CrossStreet: Barclay & Davis

Call us now



Phone: (231)730-8781
Email: tuckerbennerteam@gmail.com
Address: 2747 Lakeshore Drive, Twin Lake, MI 49457

