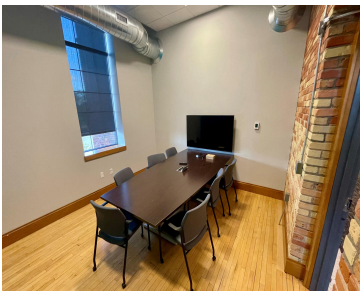
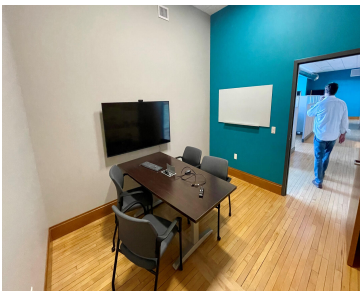


1161, SOUTHERN, MUSKEGON, MI, 49441

<https://tuckerbenner.com>



CORE REALTY **\$16**

This amazing 34,956 sq. ft. building sits in the middle of Nim’s neighborhood. The site is a stone’s throw away from the deep water port of Muskegon Lake and just 4 miles from our pristine Pere Marquette Park on Lake Michigan. This must-see building had both a high-end and high-tech complete remodel in 2018/2019 and [...]

- 0 baths
- Office
- Commercial Lease
- Active



Basics

Category: Commercial Lease **Type:** Office
Status: Active **Bathrooms:** 0 baths
Lot size: 2.99 sq ft **Year built:** 1912
Lot Size Acres: 2.99 acres **Business Type:** Professional Service, Professional/Office, Institutional
County: Muskegon



Call us now

Phone: (231)730-8781
 Email: tuckerbennerteam@gmail.com
 Address: 2747 Lakeshore Drive, Twin Lake, MI 49457



Building Details

Construction Materials: Brick, Stone

Heating: Forced Air, Natural Gas

Number Of Buildings: 1

Sewer: Public Sewer

Roof: Rubber

Basement: None

Amenities & Features

Utilities: Phone Connected, Natural Gas Connected, Electric Connected, **WaterSource:** Public
Cable Connected

Fireplaces Total: 1

Cooling: Central Air

Fees & Taxes

Tax Assessed Value: \$852,877

Tax Year: 2022

School Information

High School District: Muskegon

Miscellaneous

Road Surface Type: Paved

CrossStreet: Barclay & Davis



Call us now

Phone: (231)730-8781

Email: tuckerbennerteam@gmail.com

Address: 2747 Lakeshore Drive, Twin Lake, MI 49457

