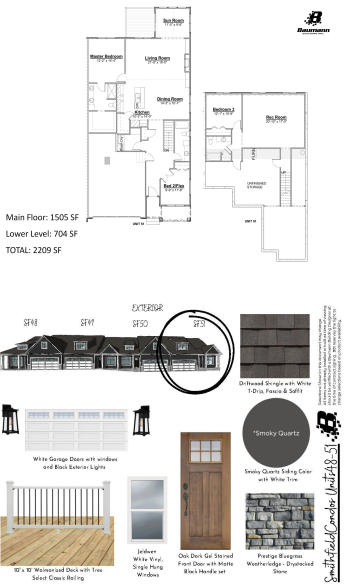
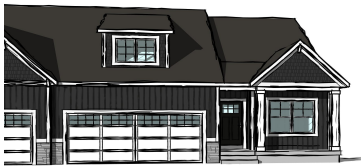


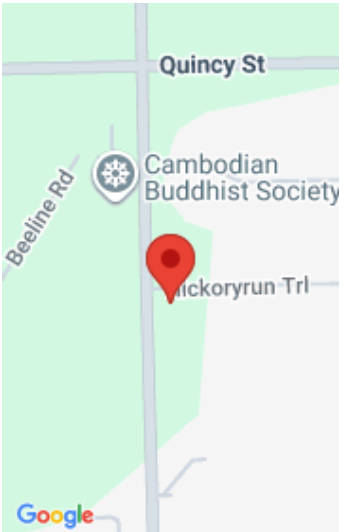
11984, SMITHFIELD, HOLLAND, MI, 49424

https://tuckerbenner.com



Here it is, the condo with a sunroom and a fireplace! Welcome to Smithfield, Baumann Building’s newest condominium community in Holland right near the corner of 120th Ave and Quincy! This beautiful unit features 2 bedrooms and 2 full bathrooms on the main floor, as well as an additional bedroom and an additional full bathroom [...]

- 3 beds
- 3 baths
- Condominium
- Residential
- Active
- 1505 sq ft



Basics

Category: Residential

Status: Active

Bathrooms: 3 baths

Year built: 2025

Bathrooms Full: 3

Rooms Total: 5

Type: Condominium

Bedrooms: 3 beds

Area: 1505 sq ft

Subdivision Name: Smithfield

Lot Size Acres: 0 acres

County: Ottawa

Building Details

Building Area Total: 1505 sq ft

Architectural Style: Ranch

Heating: Forced Air

Roof: Shingle

Construction Materials: Vinyl Siding

Sewer: Public

Stories: 1

Basement: Daylight

Amenities & Features

Laundry Features: Laundry Room, Main Level

Waterfront Features: Pond

WaterSource: Public

Interior Features: Center Island, Pantry

Cooling: Central Air

Parking Features: Garage Door Opener, Attached

Garage Spaces: 2

Appliances: Dishwasher, Microwave, Range, Refrigerator

Patio And Porch Features: Deck, Porch(es)

Fees & Taxes

Association Fee Frequency: Monthly

Association Fee Includes: Water, Trash, Snow Removal, Sewer, Lawn/Yard Care

Association Fee: \$220

Call us now

School Information

High School District: West Ottawa

Miscellaneous

CrossStreet: 120th and Quincy **Listing Terms:** Cash, FHA, VA Loan, Conventional

Call us now