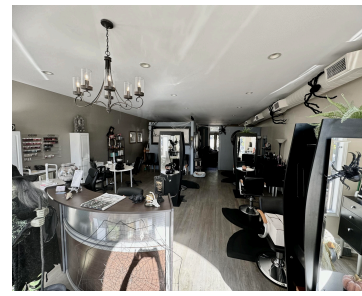


12, CENTER, DOUGLAS, MI, 49406

<https://tuckerbenner.com>



A charming and progressive City of Douglas offering surrounded by 3 thriving restaurants, galleries and retail stores, just a few blocks from 2 parks and Kalamazoo River access. This attractive building offers large windows and hard to find basement storage. Presently operating as a salon but great retail potential on the main street in downtown [...]

- 1 bath
- Retail/Commercial
- Commercial Sale
- Active



Basics

Category: Commercial Sale

Status: Active

Lot size: 0.03 sq ft

Bathrooms Full: 1

Business Type: Professional/Office, Professional Service, Restaurant, Retail

Type: Retail/Commercial

Bathrooms: 1 bath

Year built: 26

Lot Size Acres: 0.03 acres

County: Allegan



Call us now

Phone: (231)730-8781

Email: tuckerbennerteam@gmail.com

Address: 2747 Lakeshore Drive, Twin Lake, MI 49457



Building Details

Building Area Total: 1230 sq ft

Sewer: Public Sewer

StoriesTotal: 1

Number Of Units Total: 1

Heating: Forced Air

Number Of Buildings: 1

Amenities & Features

Inclusions: Real Estate

Utilities: Cable Available, Phone Connected, Natural Gas Connected, Electricity Connected, Broadband

Waterfront Features: River **WaterSource:** Public

Fees & Taxes

Tax Assessed Value: \$101,245

Tax Year: 2024

Tax Annual Amount: \$5,941

School Information

High School District: Saugatuck-Douglas

Miscellaneous

CrossStreet: Main and Spring

Listing Terms: Conventional, Cash



Call us now

Phone: (231)730-8781

Email: tuckerbennerteam@gmail.com

Address: 2747 Lakeshore Drive, Twin Lake, MI 49457

