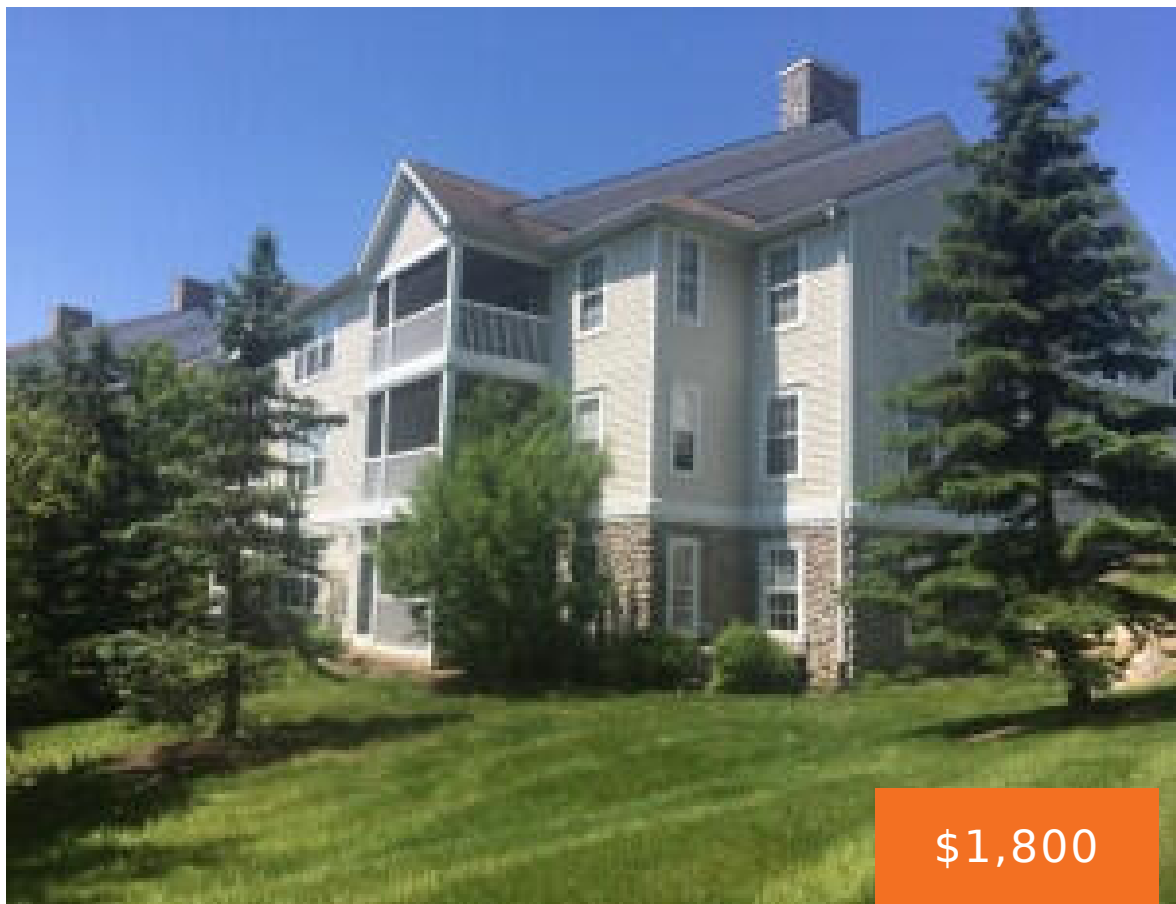


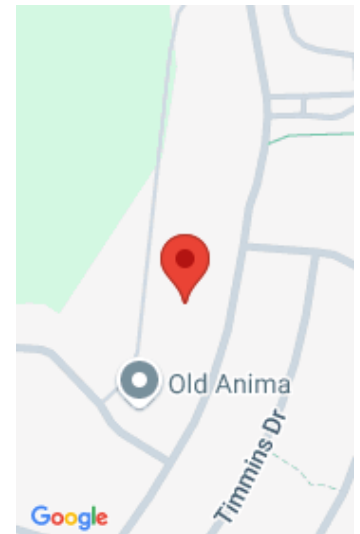
1201, JOYCE, ANN ARBOR, MI, 48103

<https://tuckerbenner.com>



Ranch style lower level walk-out overlooking spruce trees and wetlands. 2 Bedrooms & 2 full Baths. Screened-in porch (8×12) with direct access to lawn and lush landscaping. Neutral decor and Maytag appliances including washer & dryer. Large living room (16×20). Master suite (12×19) with alcove for sitting area or office, bathroom and large his and [...]

- 2 beds
- 2 baths
- Condominium
- Residential Lease
- Active
- 1160 sq ft



Call us now



Phone: (231)730-8781

Email: tuckerbennerteam@gmail.com

Address: 2747 Lakeshore Drive, Twin Lake, MI 49457



Basics

Category: Residential Lease
Status: Active
Bathrooms: 2 baths
Lot size: 0 sq ft
Bathrooms Full: 2
County: Washtenaw

Type: Condominium
Bedrooms: 2 beds
Area: 1160 sq ft
Year built: 2002
Lot Size Acres: 0 acres

Building Details

Architectural Style: Ranch
Stories: 1
Heating: Forced Air
Basement: Slab

Amenities & Features

Parking Features: Garage Door Opener, Detached
Cooling: Central Air
Garage Spaces: 1

School Information

High School District: Ann Arbor

Miscellaneous

CrossStreet: Liberty and Scio Church
Tenant Pays: A/C, Cable/Satellite, Electric, Heat, Housekeeping, Internet Access, Linens, Phone, WIFI
Owner Pays: Association Fees, Lawn/Yard Care, Trash, Sewer, Snow Removal, Taxes, Water

Call us now