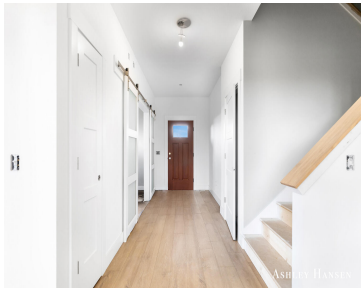


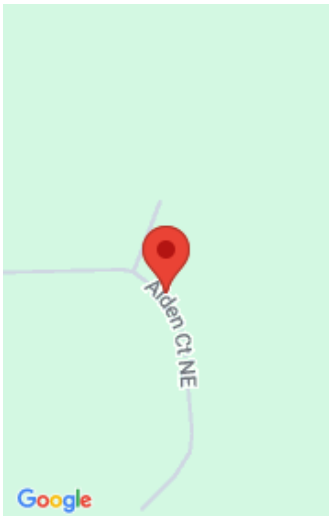
12036, ALDEN, LOWELL, MI, 49331

https://tuckerbenner.com



Fabulous new 2-story by Bruyn Homes featuring over 2,300 finished sq ft with a functional, modern layout. Main floor offers 9-ft ceilings, a private office/flex room, spacious living room with gas fireplace, large kitchen with walk-in pantry, stainless appliances, custom hood vent, and dining area overlooking the backyard. Mudroom includes drop zone bench, coat closet [...]

- 3 beds
- 3 baths
- Single Family Residence
- Residential
- Active
- 2309 sq ft



Call us now

Phone: (231)730-8781  
Email: tuckerbennerteam@gmail.com  
Address: 2747 Lakeshore Drive, Twin Lake, MI 49457

# Basics

<b>Category:</b> Residential	<b>Type:</b> Single Family Residence
<b>Status:</b> Active	<b>Bedrooms:</b> 3 beds
<b>Bathrooms:</b> 3 baths	<b>Area:</b> 2309 sq ft
<b>Lot size:</b> 0.89 sq ft	<b>Year built:</b> 250
<b>Bathrooms Full:</b> 2	<b>Lot Size Acres:</b> 0.89 acres
<b>Rooms Total:</b> 9	<b>County:</b> Kent
<b>Bathrooms Half:</b> 1	

# Building Details

<b>Building Area Total:</b> 2309 sq ft	<b>Construction Materials:</b> Stone, Vinyl Siding
<b>Architectural Style:</b> Traditional	<b>Sewer:</b> Septic Tank
<b>Heating:</b> Forced Air	<b>Stories:</b> 2
<b>Basement:</b> Daylight, Full	

# Amenities & Features

<b>Laundry Features:</b> Gas Dryer Hookup, Laundry Room	<b>Flooring:</b> Carpet, Ceramic Tile, Vinyl
<b>Utilities:</b> Cable Available, Natural Gas Connected	<b>Parking Features:</b> Garage Faces Front, Garage Door Opener, Attached
<b>Fireplace Features:</b> Gas Log, Living Room	<b>Garage Spaces:</b> 3
<b>WaterSource:</b> Private Water	<b>Appliances:</b> Dishwasher, Disposal, Range, Refrigerator
<b>Interior Features:</b> Broadband, Center Island, Pantry	<b>Patio And Porch Features:</b> Deck
<b>Fireplaces Total:</b> 1	<b>Cooling:</b> SEER 13 or Greater

# Fees & Taxes

Call us now

**Tax Assessed Value:** \$40,002

**Association Fee:** \$400

**Tax Annual Amount:** \$1,874

**Association Fee Frequency:** Annually

**Tax Year:** 2025

**Association Fee Includes:** Other

## School Information

**High School District:** Lowell

## Miscellaneous

**Road Surface Type:** Paved

**CrossStreet:** Alden Nash and Alden Ct

**Listing Terms:** Cash, VA Loan, Conventional

**Call us now**