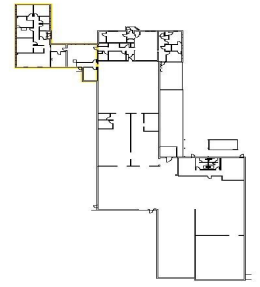


1206, CROSSTOWN, KALAMAZOO, MI, 49001

<https://tuckerbenner.com>



This 24,424 SF light industrial building, situated near Downtown Kalamazoo, is being offered for lease and offers a range of versatile uses. The property offers a combination of office and warehouse space, making it an excellent choice for various industrial uses. The landlord will demise. The office space includes a conference room, clerical area, and [...]

- 0 baths
- Industrial
- Commercial Lease
- Active



Basics

Category: Commercial Lease **Type:** Industrial

Status: Active

Bathrooms: 0 baths

Lot size: 1.75 sq ft

Year built: 1962

Lot Size Acres: 1.75 acres

Business Type: Professional Service, Professional/Office, Storage, Manufacturing, Distribution

County: Kalamazoo



Call us now

Phone: (231)730-8781

Email: tuckerbennerteam@gmail.com

Address: 2747 Lakeshore Drive, Twin Lake, MI 49457



Building Details

Building Area Total: 2892 sq ft

Heating: Forced Air

Sewer: Public Sewer

Number Of Buildings: 1

Amenities & Features

Utilities: Phone Available, Natural Gas Available, Electricity Available, Cable Available, Phone Connected, Natural Gas Connected, Electricity Connected, Cable Connected, Water Available, Sewer Available, Storm Sewer, Broadband

WaterSource:
Public

Fireplaces Total: 1

School Information

High School District: Kalamazoo

Miscellaneous

CrossStreet: Mills St & King Highway



Call us now

Phone: (231)730-8781

Email: tuckerbennerteam@gmail.com

Address: 2747 Lakeshore Drive, Twin Lake, MI 49457

