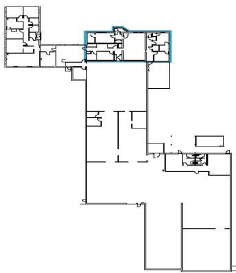


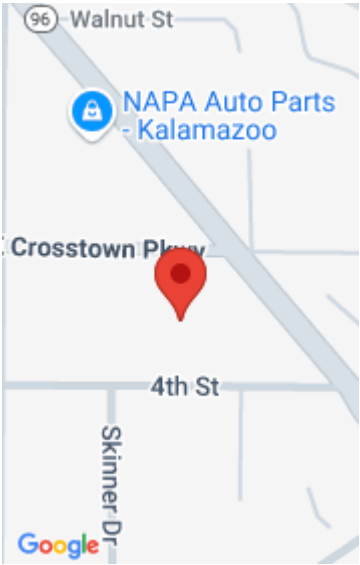
# 1206, CROSSTOWN, KALAMAZOO, MI, 49001

<https://tuckerbenner.com>




This 24,424 SF light industrial building, situated near Downtown Kalamazoo, is being offered for lease and offers a range of versatile uses. The property offers a combination of office and warehouse space, making it an excellent choice for various industrial uses. The landlord will demise. The office space includes a conference room, clerical area, and [...]


- 0 baths
- Industrial
- Commercial Lease
- Active



## Call us now



Phone: (231)730-8781  
Email: [tuckerbennerteam@gmail.com](mailto:tuckerbennerteam@gmail.com)  
Address: 2747 Lakeshore Drive, Twin Lake, MI 49457



# Basics

**Category:** Commercial Lease    **Type:** Industrial  
**Status:** Active    **Bathrooms:** 0 baths  
**Lot size:** 1.75 sq ft    **Year built:** 1962  
**Lot Size Acres:** 1.75 acres    **Business Type:** Professional Service, Professional/Office, Storage, Manufacturing, Distribution  
**County:** Kalamazoo

# Building Details

**Building Area Total:** 2184 sq ft    **Sewer:** Public Sewer  
**Heating:** Forced Air    **Number Of Buildings:** 1

# Amenities & Features

**Utilities:** Phone Available, Natural Gas Available, Electricity Available, Cable Available, Phone Connected, Natural Gas Connected, Electricity Connected, Cable Connected, Water Available, Sewer Available, Storm Sewer, Broadband    **WaterSource:** Public  
**Fireplaces Total:** 1

# School Information

**High School District:** Kalamazoo

# Miscellaneous

**CrossStreet:** Mills St & King Highway

Call us now