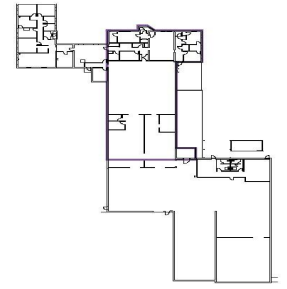


# 1206, CROSSTOWN, KALAMAZOO, MI, 49001

<https://tuckerbenner.com>



This 24,424 SF light industrial building, situated near Downtown Kalamazoo, is being offered for lease and offers a range of versatile uses. The property offers a combination of office and warehouse space, making it an excellent choice for various industrial uses. The landlord will demise. The office space includes a conference room, clerical area, and [...]

- 0 baths
- Industrial
- Commercial Lease
- Active



## Basics

**Category:** Commercial Lease **Type:** Industrial

**Status:** Active

**Bathrooms:** 0 baths

**Lot size:** 1.75 sq ft

**Year built:** 1962

**Lot Size Acres:** 1.75 acres

**Business Type:** Professional Service, Professional/Office, Storage, Manufacturing, Distribution

**County:** Kalamazoo



## Call us now

Phone: (231)730-8781

Email: [tuckerbennerteam@gmail.com](mailto:tuckerbennerteam@gmail.com)

Address: 2747 Lakeshore Drive, Twin Lake, MI 49457



---

## Building Details

**Building Area Total:** 5670 sq ft

**Heating:** Forced Air

**Sewer:** Public Sewer

**Number Of Buildings:** 1

---

## Amenities & Features

**Utilities:** Phone Available, Natural Gas Available, Electricity Available, Cable Available, Phone Connected, Natural Gas Connected, Electricity Connected, Cable Connected, Water Available, Sewer Available, Storm Sewer, Broadband

**WaterSource:**  
Public

**Fireplaces Total:** 1

---

## School Information

**High School District:** Kalamazoo

---

## Miscellaneous

**CrossStreet:** Mills St & King Highway



### Call us now

Phone: (231)730-8781

Email: [tuckerbennerteam@gmail.com](mailto:tuckerbennerteam@gmail.com)

Address: 2747 Lakeshore Drive, Twin Lake, MI 49457

