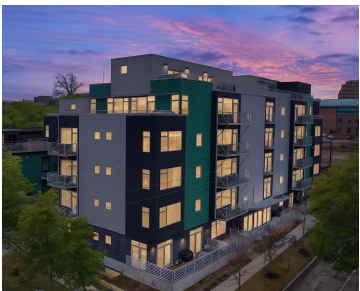


121, KINGSLEY, ANN ARBOR, MI, 48103

<https://tuckerbenner.com>



If you like big football weekends with many overnight guests, or more intimate, serene times, this one-of-a-kind penthouse in the lovely Kerrytown District is your new home. The spacious layout with exquisite terraces provide ample elegance for entertaining large groups, and the cozy fireplace, media room, and all-weather, heated patios provide many options. This extraordinary [...]

- 2 beds
- 3 baths
- Condominium
- Residential Lease
- Active
- 2587 sq ft



Call us now

Phone: (231)730-8781
Email: tuckerbennerteam@gmail.com
Address: 2747 Lakeshore Drive, Twin Lake, MI 49457



Basics

Category: Residential Lease
Status: Active
Bathrooms: 3 baths
Lot size: 0 sq ft
Bathrooms Full: 2
Rooms Total: 12
Bathrooms Half: 1

Type: Condominium
Bedrooms: 2 beds
Area: 2587 sq ft
Year built: 2014
Lot Size Acres: 0 acres
County: Washtenaw

Building Details

Heating: Forced Air
Common Walls: End Unit

Stories: 2
Basement: Slab

Amenities & Features

Laundry Features: Laundry Room
Garage Spaces: 3
Cooling: Central Air
Parking Features: Tandem, Garage Door Opener, Detached, Attached
Fireplaces Total: 100

Fees & Taxes

Association Fee Includes: Sewer, Snow Removal, Water

School Information

Call us now

High School District: Ann Arbor

Middle Or Junior School: Forsythe Middle School

HighSchool: Skyline High School

Elementary School: Bach Elementary School

Miscellaneous

CrossStreet: Kingsley & Ashley

Tenant Pays: A/C, Cable/Satellite, Electric, Heat, Internet Access, Phone, Trash, WIFI

Owner Pays: Association Fees, Lawn/Yard Care, Sewer, Snow Removal, Taxes, Water

Call us now