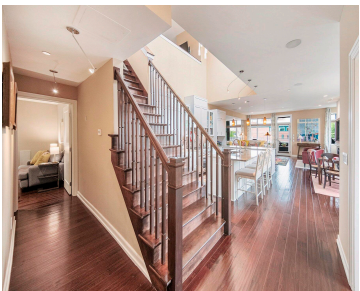
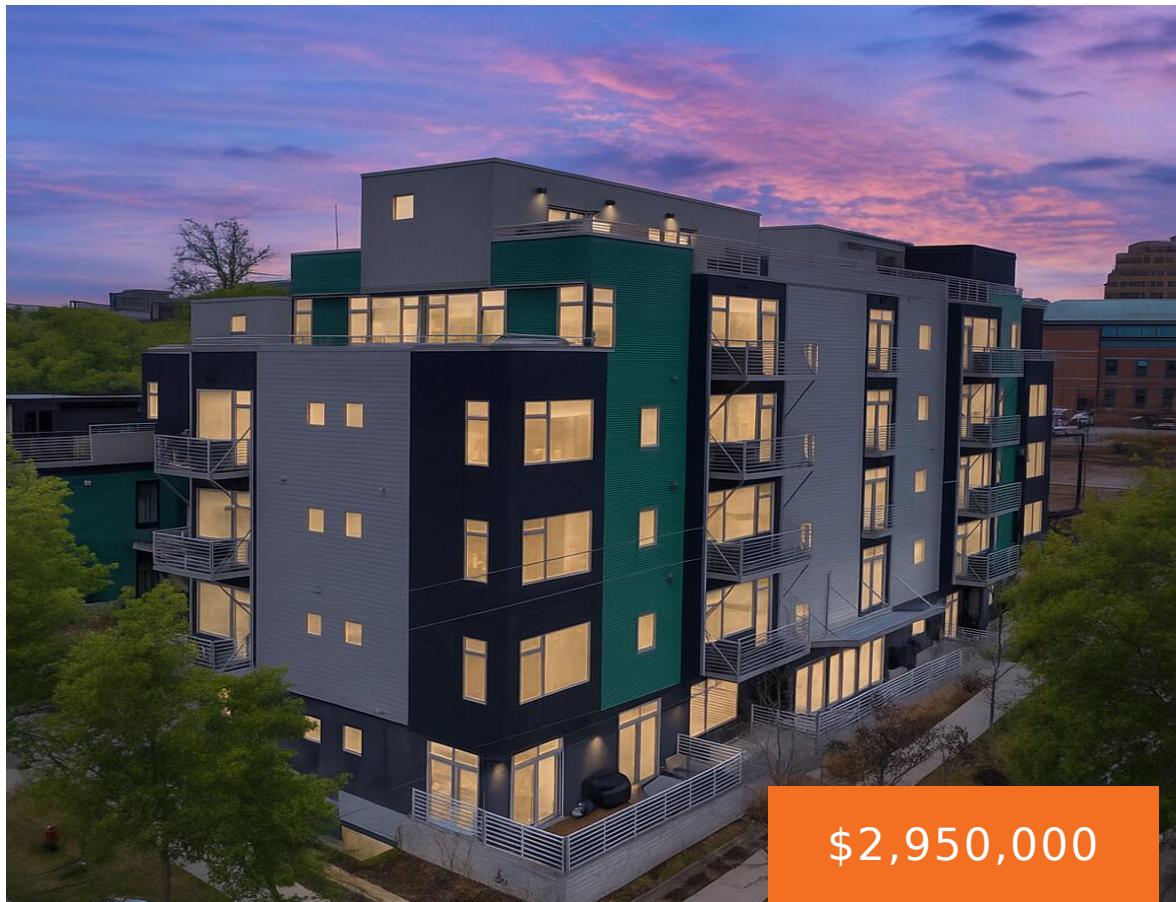


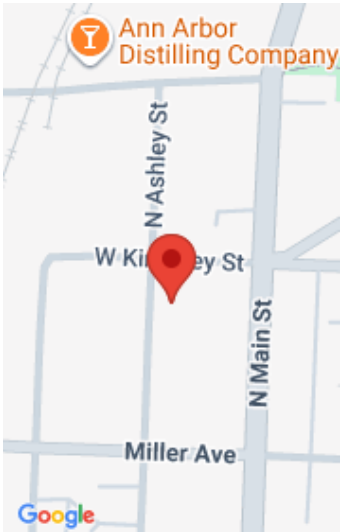
121, KINGSLEY, ANN ARBOR, MI, 48103

<https://tuckerbenner.com>



If you’ve been searching for a showstopping penthouse in the heart of Ann Arbor’s vibrant Kerrytown District, your search ends here. This extraordinary residence offers over 2,500 square feet of refined interior living and an additional 866 square feet of custom-designed outdoor space—crafted with sophisticated upgrades and elevated, refined details throughout. The dramatic two-story, open-concept [...]

- 2 beds
- 3 baths
- Condominium
- Residential
- Active
- 2587 sq ft



Basics

Category: Residential	Type: Condominium
Status: Active	Bedrooms: 2 beds
Bathrooms: 3 baths	Area: 2587 sq ft
Lot size: 0 sq ft	Year built: 2014
Bathrooms Full: 2	Lot Size Acres: 0 acres
Rooms Total: 17	County: Washtenaw
Bathrooms Half: 1	

Building Details

Building Area Total: 2587 sq ft	Construction Materials: HardiPlank Type, Other
Architectural Style: Contemporary	Sewer: Public
Heating: Forced Air	Stories: 2
Roof: Flat, Rubber	Basement: Slab

Amenities & Features

Call us now

Laundry Features: Laundry Room

Utilities: Natural Gas Connected, Cable Connected, High-Speed Internet

Parking Features: Tandem, Garage Door Opener, Detached, Attached

Garage Spaces: 3

Appliances: Bar Fridge, Built-In Gas Oven, Dishwasher, Disposal, Dryer, Microwave, Oven, Range, Refrigerator, Washer

Lot Features: Corner Lot, Sidewalk

Patio And Porch Features: 3 Season Room, Covered, Enclosed, Screened, Terrace

Fireplaces Total: 1

Flooring: Ceramic Tile, Engineered Hardwood, Tile

Association Amenities: End Unit, Interior Unit, Pets Allowed, Security, Storage

Fireplace Features: Gas Log, Living Room

WaterSource: Public

Interior Features: Ceiling Fan(s), Elevator, Garage Door Opener, Wet Bar, Center Island, Eat-in Kitchen

Window Features: Insulated Windows, Window Treatments

Exterior Features: Balcony

Cooling: Central Air

Fees & Taxes

Tax Assessed Value: \$543,532

Association Fee: \$769.31

Tax Annual Amount: \$37,427

Association Fee Frequency: Monthly

Tax Year: 2025

Association Fee Includes: Water, Trash, Snow Removal, Sewer, Lawn/Yard Care

School Information

High School District: Ann Arbor

Middle Or Junior School: Forsythe Middle School

HighSchool: Skyline High School

Elementary School: Bach Elementary School

Miscellaneous

CrossStreet: Kingsley & Ashley

Listing Terms: Cash, Conventional

Call us now