

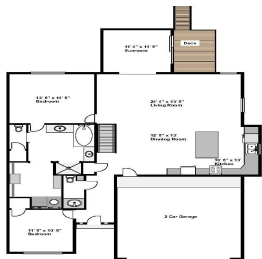
12250, ALEIGHA, GRAND RAPIDS, MI, 49534

<https://tuckerbenner.com>



\$429,900

Welcome to 12250 Aleigha Dr. NW, a beautiful 4-bedroom, 2 1/2 bath home nestled in the highly sought-after Tallmadge Tallmadge Township. As you step inside, you'll immediately be captivated by the expansive open floor plan, bathed in natural light from the large windows that create a bright, welcoming atmosphere. The vaulted ceilings and contemporary finishes [...]



- 4 beds
- 3 baths
- Condominium
- Residential
- Active
- 3048 sq ft



Call us now

Phone: (231)730-8781
Email: tuckerbennerteam@gmail.com
Address: 2747 Lakeshore Drive, Twin Lake, MI 49457



Basics

Category: Residential
Status: Active
Bathrooms: 3 baths
Lot size: 21.41 sq ft
Subdivision Name: Tallmadge Woods
Lot Size Acres: 21.41 acres
County: Ottawa

Type: Condominium
Bedrooms: 4 beds
Area: 3048 sq ft
Year built: 2007
Bathrooms Full: 2
Rooms Total: 6
Bathrooms Half: 1

Building Details

Building Area Total: 1596 sq ft
Architectural Style: Ranch
Heating: Forced Air
Roof: Shingle

Construction Materials: Brick, Vinyl Siding
Sewer: Public Sewer
Stories: 1
Basement: Daylight

Amenities & Features

Laundry Features: Gas Dryer Hookup, Upper Level
Parking Features: Garage Door Opener, Attached
Garage Spaces: 2
Appliances: Refrigerator, Range, Oven, Microwave, Dishwasher
Lot Features: Wooded
Fireplaces Total: 1

Utilities: Electricity Available, Cable Available, Storm Sewer, Public Water, Public Sewer
Fireplace Features: Living Room
WaterSource: Public
Interior Features: Garage Door Opener, Kitchen Island, Pantry
Exterior Features: Deck(s)
Cooling: Central Air

Fees & Taxes

Call us now

Tax Assessed Value: \$106,512

Association Fee Frequency: Monthly

Association Fee: \$325

Tax Year: 2024

Tax Annual Amount: \$3,024

Association Fee Includes: Water, Trash, Snow Removal,
Sewer, Lawn/Yard Care

School Information

High School District: Coopersville

Miscellaneous

Road Surface Type: Paved

CrossStreet: Leonard

Listing Terms: Cash, FHA, VA Loan, MSHDA, Conventional

Call us now