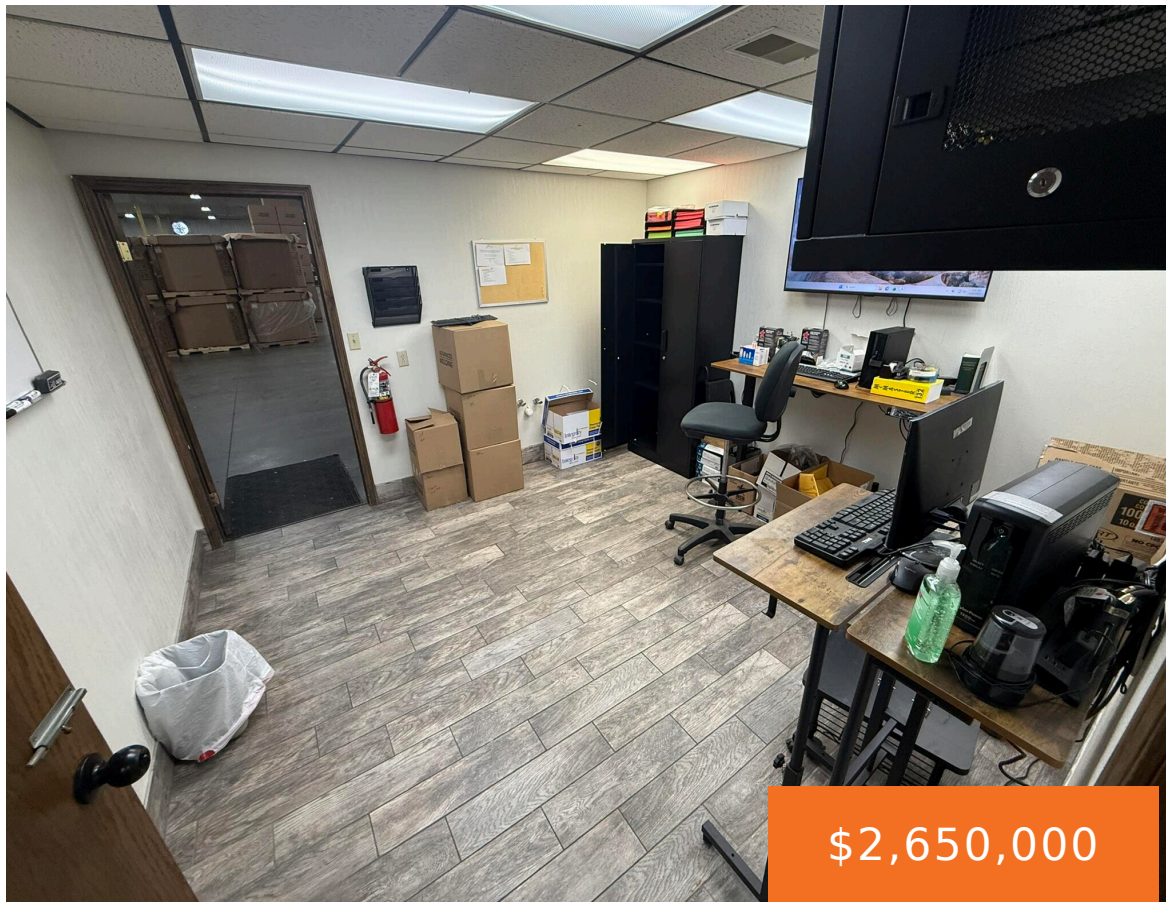


# 12463, CLEVELAND, NUNICA, MI, 49448

<https://tuckerbenner.com>



\$2,650,000

Positioned in the heart of West Michigan's manufacturing corridor, this well-maintained industrial facility offers a rare opportunity for manufacturers, processors, warehousing users, or investors seeking a versatile, power-rich industrial asset. Currently configured as a plastic injection molding operation, the property features significant infrastructure improvements and a layout that can readily accommodate a variety of industrial [...]

- 5 baths
- Industrial
- Commercial Sale
- Active



## Basics

**Category:** Commercial Sale

**Status:** Active

**Lot size:** 3 sq ft

**Bathrooms Full:** 5

**Business Type:** Distribution, Storage, Manufacturing

**Type:** Industrial

**Bathrooms:** 5 baths

**Year built:** 1992

**Lot Size Acres:** 3 acres

**County:** Ottawa

## Call us now



Phone: (231)730-8781

Email: [tuckerbennerteam@gmail.com](mailto:tuckerbennerteam@gmail.com)

Address: 2747 Lakeshore Drive, Twin Lake, MI 49457



---

## Building Details

**Building Area Total:** 35720 sq ft

**Construction Materials:** Metal Siding

**Heating:** Forced Air, Radiant

**Building Features:** Bath Common Area, Expandable, Over Head Crane, Security System

**Foundation Details:** Slab

**Number Of Units Total:** 1

**Sewer:** Septic Tank

**StoriesTotal:** 1

**Roof:** Metal

**Number Of Buildings:** 1

---

## Amenities & Features

**Inclusions:** Non-Applicable **Utilities:** Phone Available, Electricity Available, Cable Available, Electricity Connected, Cable Connected, Propane

**WaterSource:** Well

**Cooling:** Central Air

---

## Fees & Taxes

**Tax Assessed Value:** \$1,035,775

**Tax Year:** 2026

**Tax Annual Amount:** \$29,236.10

---

## School Information

**High School District:** Spring Lake

---

## Miscellaneous

**CrossStreet:** 120th & 130th

**Listing Terms:** Conventional, Cash

### Call us now



Phone: (231)730-8781

Email: tuckerbennerteam@gmail.com

Address: 2747 Lakeshore Drive, Twin Lake, MI 49457

