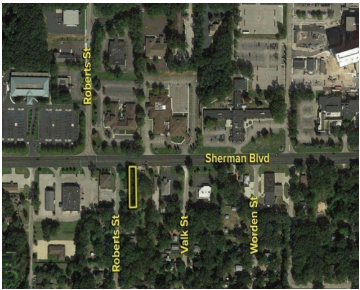


1257, SHERMAN, NORTON SHORES, MI, 49444

<https://tuckerbenner.com>



Located just west of US-31, this property offers exceptional visibility across from Trinity Health, Mercy Health’s Mercy Campus and near numerous medical offices, Walgreens Pharmacy, and Watkins Pharmacy. Just east of US-31, you’ll find major retailers like Sam’s Club, Walmart, and Lowe’s, along with a variety of restaurants. The vacant land and extra parcel with [...]

- 0 baths
- Commercial Land
- Land
- Active



Call us now



Phone: (231)730-8781

Email: tuckerbennerteam@gmail.com

Address: 2747 Lakeshore Drive, Twin Lake, MI 49457



Basics

Category: Land

Status: Active

Lot size: 0.23 sq ft

County: Muskegon

Type: Commercial Land

Bathrooms: 0 baths

Lot Size Acres: 0.23 acres

Amenities & Features

Utilities: Phone Available, Storm Sewer, Water Available, Sewer Available, Broadband, Water Connected, Sewer Connected, Electricity Connected

Fees & Taxes

Tax Assessed Value: \$38,800

Tax Year: 2024

Tax Annual Amount: \$1,064

School Information

High School District: Muskegon

Miscellaneous

CrossStreet: Sherman & US 31

Listing Terms: Cash, Conventional

Call us now