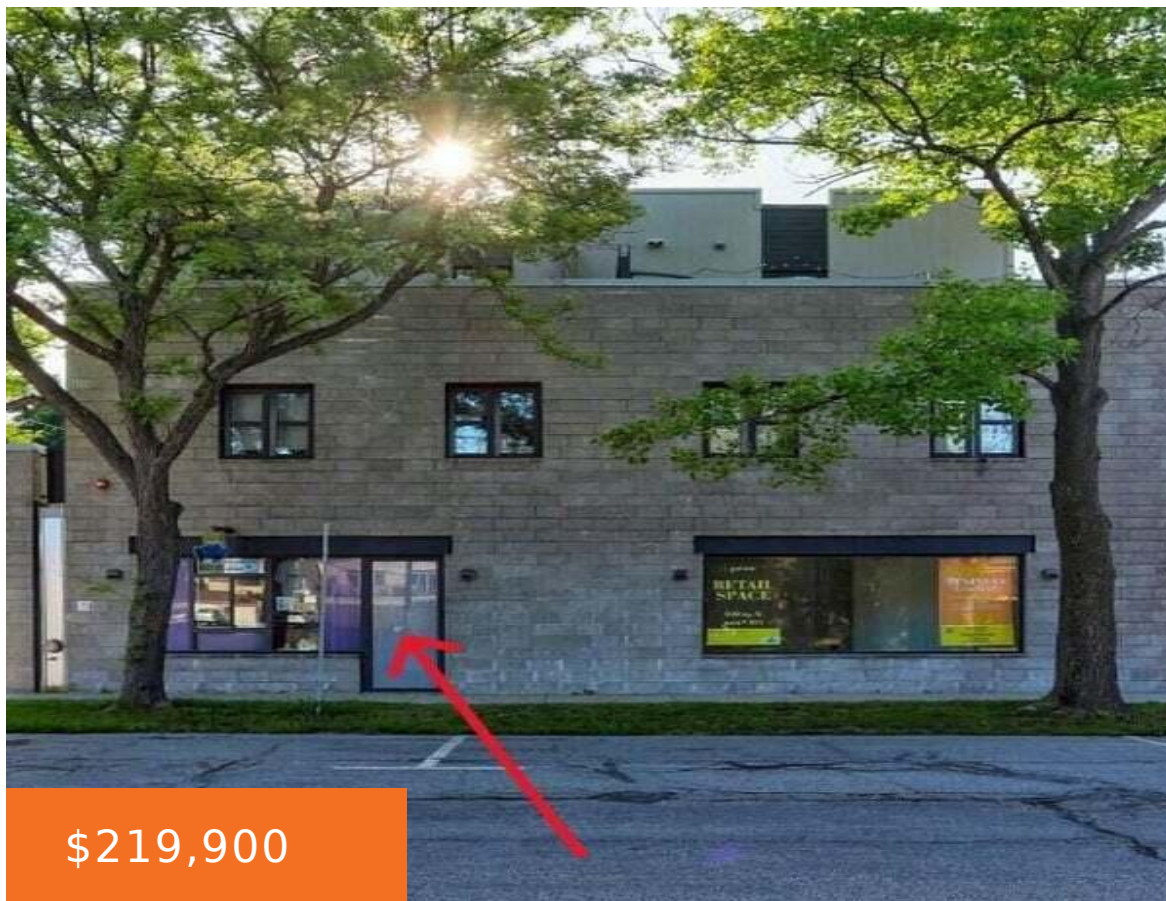


129, GRIFFITH, SAUGATUCK, MI, 49453

<https://tuckerbenner.com>



\$219,900

Commercial retail/office condo in downtown Saugatuck. Space is divided with front retail with ticket window and back meeting or storage area. Common area restroom. Assoc dues \$700/ qtr

- 0 baths
- Retail/Commercial
- Commercial Sale
- Active



Basics

Category: Commercial Sale

Status: Active

Lot size: 0.2 sq ft

Lot Size Acres: 0.2 acres

County: Allegan

Type: Retail/Commercial

Bathrooms: 0 baths

Year built: 2015

Business Type: Professional/Office, Storage



Call us now

Phone: (231)730-8781

Email: tuckerbennerteam@gmail.com

Address: 2747 Lakeshore Drive, Twin Lake, MI 49457



Building Details

Building Area Total: 420 sq ft

Construction Materials: Block

Heating: Forced Air

Foundation Details: Slab

Number Of Units Total: 14

Sewer: Public Sewer

StoriesTotal: 3

Number Of Buildings: 1

Amenities & Features

Utilities: Cable Available, Natural Gas Connected, Electricity Connected, **WaterSource:** Public
Cable Connected

Fireplaces Total: 1

Cooling: Central Air

Fees & Taxes

Tax Assessed Value: \$51,450

Tax Year: 2024

Tax Annual Amount: \$3,035

School Information

High School District: Saugatuck-Douglas

Miscellaneous

Road Surface Type: Paved

CrossStreet: Culver & Mason

Listing Terms: Conventional, Cash



Call us now

Phone: (231)730-8781

Email: tuckerbennerteam@gmail.com

Address: 2747 Lakeshore Drive, Twin Lake, MI 49457

