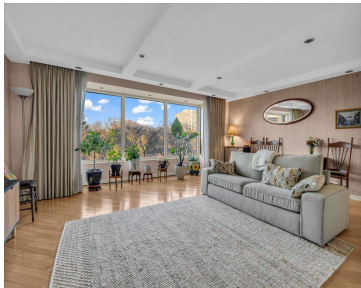
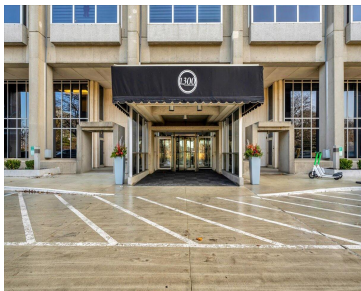


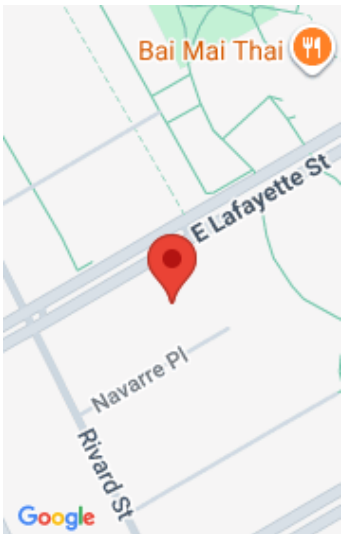
1300, LAFAYETTE, DETROIT, MI, 48207

<https://tuckerbenner.com>



Elegant Mid-Century Modern One-Bedroom in Historic Lafayette Park Welcome to this beautifully updated one-bedroom residence at 1300 E Lafayette, offering serene views overlooking the lush green spaces of Lafayette Park. Thoughtfully renovated with sophisticated finishes throughout, this home delivers a refined, low-maintenance lifestyle just minutes from the heart of Downtown Detroit. Set within a classic [...]

- 1 bed
- 1 bath
- Stock Cooperative
- Residential
- Active
- 739 sq ft



Basics

Category: Residential

Status: Active

Bathrooms: 1 bath

Year built: 1964

Lot Size Acres: 0 acres

County: Wayne

Type: Stock Cooperative

Bedrooms: 1 bed

Area: 739 sq ft

Bathrooms Full: 1

Rooms Total: 739

Building Details

Building Area Total: 739 sq ft

Architectural Style: Mid-Century Modern

Heating: Wall Furnace

Basement: Other

Construction Materials: Concrete

Sewer: Public

Stories: 29

Amenities & Features

Laundry Features: In Basement

WaterSource: Public

Flooring: Wood

Cooling: Central Air

Fees & Taxes

Association Fee Frequency: Monthly

Association Fee: \$1,064

Tax Year: 2025

Association Fee Includes: Water, Trash, Snow Removal, Sewer, Lawn/Yard Care, Heat

School Information

Call us now



High School District: Detroit

Miscellaneous

CrossStreet: Lafayette and Rivard

Listing Terms: Cash, Conventional

Call us now