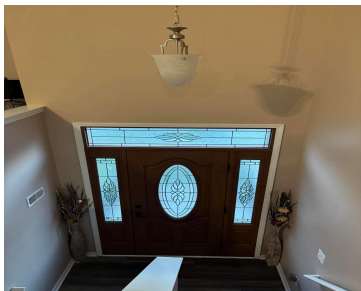


13337, CUMBERLAND, VAN BUREN TWP, MI, 48111

https://tuckerbenner.com

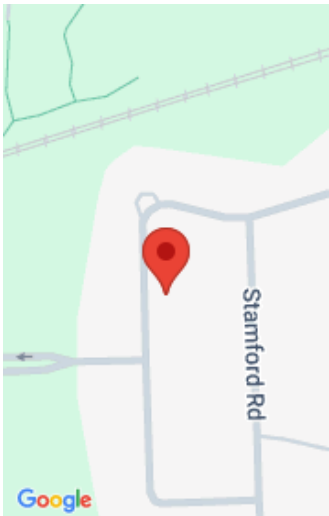


\$330,000



Motivated Seller! Welcome to this move-in-ready home in the desirable Country Walk III Subdivision! This beautifully maintained 3-bedroom, 3-bath raised ranch features a spacious bi-level layout, a four-sided brick exterior, a large manicured lawn, and an inviting front entryway with a poured concrete porch. Remodeled in 2019 and freshly painted in 2025, the home boasts [...]

- 3 beds
- 3 baths
- Single Family Residence
- Residential
- Active
- 1735 sq ft



Call us now

Phone: (231)730-8781
Email: tuckerbennerteam@gmail.com
Address: 2747 Lakeshore Drive, Twin Lake, MI 49457

Basics

Category: Residential

Status: Active

Bathrooms: 3 baths

Lot size: 0.2 sq ft

Subdivision Name: COUNTRY WALK III

Lot Size Acres: 0.2 acres

County: Wayne

Type: Single Family Residence

Bedrooms: 3 beds

Area: 1735 sq ft

Year built: 2009

Bathrooms Full: 2

Rooms Total: 7

Bathrooms Half: 1

Building Details

Building Area Total: 1735 sq ft

Sewer: Public

Stories: 2

Levels: Bi-Level

Construction Materials: Brick, Vinyl Siding

Heating: Forced Air

Roof: Asphalt

Basement: Daylight, Slab, Walk-Out Access

Amenities & Features

Laundry Features: Electric Dryer Hookup, Gas Dryer Hookup, Lower Level, Washer Hookup

Utilities: Phone Available, Natural Gas Available, Electricity Available, Cable Available, Storm Sewer

Parking Features: Garage Faces Front, Garage Door Opener, Attached

WaterSource: Public

Interior Features: Ceiling Fan(s), Broadband, Garage Door Opener, Center Island

Window Features: Storms, Skylight(s), Screens, Insulated Windows, Window Treatments

Fireplaces Total: 1

Flooring: Carpet, Vinyl

Association Amenities: Detached Unit, Pets Allowed, Security

Garage Spaces: 2

Appliances: Dishwasher, Disposal, Microwave, Range, Refrigerator

Lot Features: Level, Sidewalk, Site Condo

Patio And Porch Features: Porch(es)

Cooling: Central Air

Call us now

Fees & Taxes

Tax Assessed Value: \$68,380

Association Fee: \$137

Tax Annual Amount: \$2,680.90

Association Fee Frequency: Quarterly

Tax Year: 2024

Association Fee Includes: None

School Information

High School District: Van Buren

Miscellaneous

Road Surface Type: Paved

CrossStreet: E Huron River Dr
and Savage Rd

Listing Terms: Cash, FHA, VA Loan, Rural Development,
MSHDA, Conventional, Assumable

Call us now