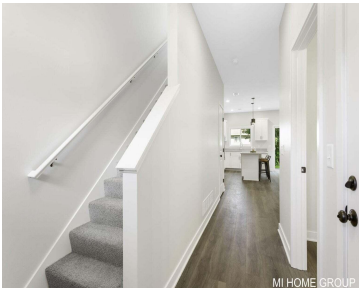
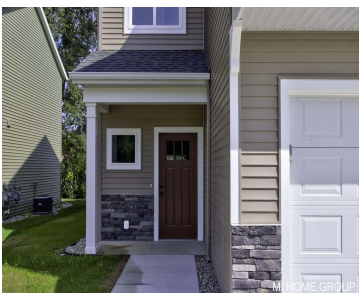
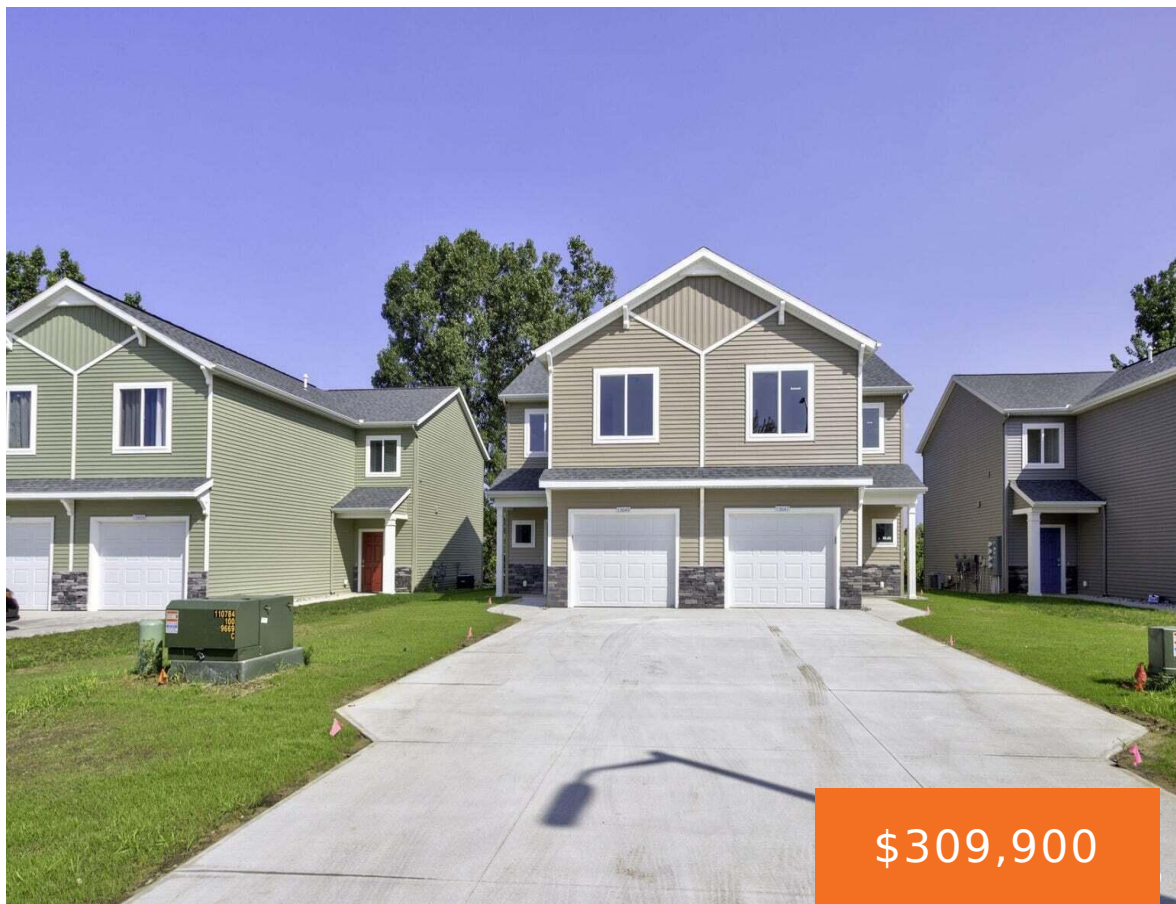


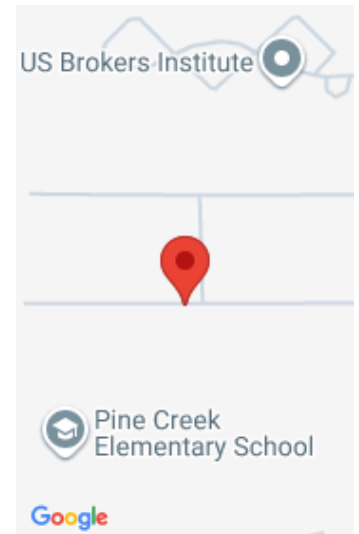
13652, SIGNATURE, HOLLAND, MI, 49424

https://tuckerbenner.com



Discover modern luxury in the heart of Holland, MI, with this new construction 3-bed, 2.5-bath condo at Signature Estates. This open-concept residence features a gourmet kitchen, spacious living areas, and lots of storage. The master suite offers a tranquil retreat, complete with a spa-like ensuite. Enjoy the perfect blend of convenience and elegance. Neutral paint [...]

- 3 beds
- 3 baths
- Condominium
- Residential
- Active
- 1520 sq ft



Basics

Category: Residential

Status: Active

Bathrooms: 3 baths

Lot size: 0 sq ft

Bathrooms Full: 2

Rooms Total: 8

Bathrooms Half: 1

Type: Condominium

Bedrooms: 3 beds

Area: 1520 sq ft

Year built: 2025

Lot Size Acres: 0 acres

County: Ottawa

Building Details

Building Area Total: 1520 sq ft

Construction Materials: Stone, Vinyl Siding

Architectural Style: Traditional

Sewer: Public

Heating: Forced Air

Stories: 2

Roof: Composition

Basement: Slab

Amenities & Features

Laundry Features: Upper Level

Garage Spaces: 1

Appliances: Dishwasher, Microwave, Range, Refrigerator

Patio And Porch Features: Patio

Parking Features: Attached

WaterSource: Public

Interior Features: Center Island, Pantry

Cooling: Central Air

Fees & Taxes

Tax Assessed Value: \$16,053

Association Fee Frequency: Monthly

Association Fee: \$100

Tax Year: 2024

Tax Annual Amount: \$146

Association Fee Includes: Lawn/Yard Care

Call us now



School Information

High School District: West Ottawa

Miscellaneous

CrossStreet: 136th & Signature Dr.

Listing Terms: Cash, Conventional

Call us now