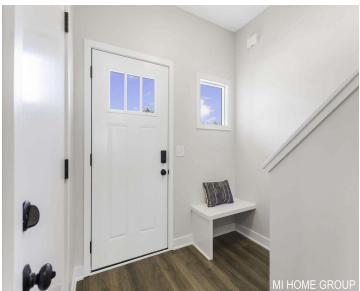


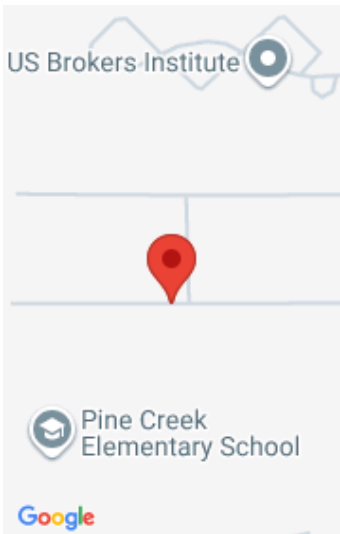
# 13664, SIGNATURE, HOLLAND, MI, 49424

<https://tuckerbenner.com>



Welcome to this brand-new construction townhouse by T2 Construction, located in Signature Estates neighborhood in Holland. This modern home features 3 spacious bedrooms, all conveniently located on the upper level for maximum privacy and comfort. The large master suite boasts a generously sized walk-in closet and its own private bathroom, offering a perfect retreat at [...]

- 3 beds
- 3 baths
- Condominium
- Residential
- Active
- 1520 sq ft



# Basics

**Category:** Residential

**Status:** Active

**Bathrooms:** 3 baths

**Year built:** 2026

**Lot Size Acres:** 0 acres

**County:** Ottawa

**Type:** Condominium

**Bedrooms:** 3 beds

**Area:** 1520 sq ft

**Bathrooms Full:** 2

**Rooms Total:** 8

**Bathrooms Half:** 1

# Building Details

**Building Area Total:** 1520 sq ft

**Construction Materials:** Stone, Vinyl Siding

**Architectural Style:** Traditional

**Sewer:** Public

**Heating:** Forced Air

**Stories:** 2

**Roof:** Composition

**Basement:** Slab

# Amenities & Features

**Laundry Features:** Upper Level

**Garage Spaces:** 1

**Appliances:** Dishwasher, Microwave, Range, Refrigerator

**Patio And Porch Features:** Patio

**Parking Features:** Attached

**WaterSource:** Public

**Interior Features:** Center Island, Pantry

**Cooling:** Central Air

# Fees & Taxes

**Tax Assessed Value:** \$6,853

**Association Fee Frequency:** Monthly

**Association Fee:** \$100

**Tax Year:** 2025

**Tax Annual Amount:** \$340

**Association Fee Includes:** Lawn/Yard Care

Call us now

---

# School Information

**High School District:** West Ottawa

---

# Miscellaneous

**Road Surface Type:** Paved

**CrossStreet:** 136th & Signature Dr.

**Listing Terms:** Cash, Contract, Conventional

**Call us now**