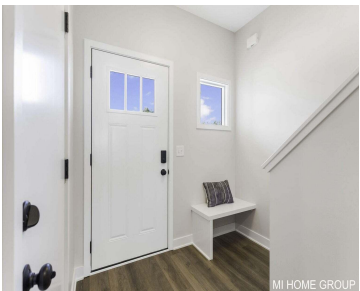


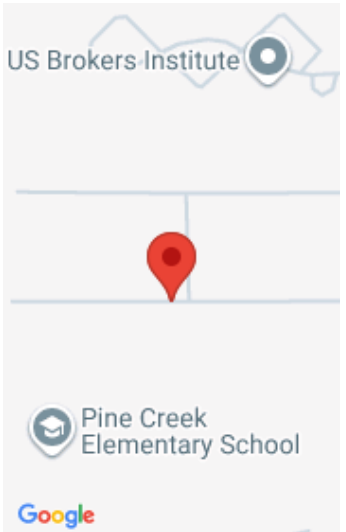
13668, SIGNATURE, HOLLAND, MI, 49424

<https://tuckerbenner.com>




Welcome to this brand-new construction townhouse by T2 Construction, located in Signature Estates neighborhood in Holland. This modern home features 3 spacious bedrooms, all conveniently located on the upper level for maximum privacy and comfort. The large master suite boasts a generously sized walk-in closet and its own private bathroom, offering a perfect retreat at [...]


- 3 beds
- 3 baths
- Condominium
- Residential
- Active
- 1520 sq ft



Call us now



Phone: (231)730-8781
Email: tuckerbennerteam@gmail.com
Address: 2747 Lakeshore Drive, Twin Lake, MI 49457



Basics

Category: Residential

Status: Active

Bathrooms: 3 baths

Year built: 2026

Lot Size Acres: 0 acres

County: Ottawa

Type: Condominium

Bedrooms: 3 beds

Area: 1520 sq ft

Bathrooms Full: 2

Rooms Total: 8

Bathrooms Half: 1

Building Details

Building Area Total: 1520 sq ft

Construction Materials: Stone, Vinyl Siding

Architectural Style: Traditional

Sewer: Public

Heating: Forced Air

Stories: 2

Roof: Composition

Basement: Slab

Amenities & Features

Laundry Features: Upper Level

Garage Spaces: 1

Appliances: Dishwasher, Microwave, Range, Refrigerator

Patio And Porch Features: Patio

Parking Features: Attached

WaterSource: Public

Interior Features: Center Island, Pantry

Cooling: Central Air

Fees & Taxes

Tax Assessed Value: \$6,853

Association Fee Frequency: Monthly

Association Fee: \$100

Tax Year: 2025

Tax Annual Amount: \$340

Association Fee Includes: Lawn/Yard Care

Call us now

School Information

High School District: West Ottawa

Miscellaneous

Road Surface Type: Paved

CrossStreet: 136th & Signature Dr.

Listing Terms: Cash, Contract, Conventional

Call us now