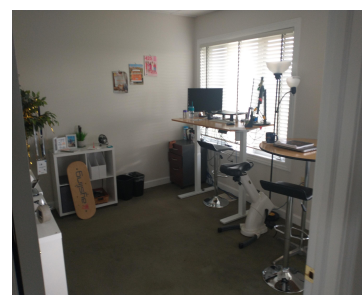


# 137, KEVELING, SALINE, MI, 48176

<https://tuckerbenner.com>



WELL LAYED OUT OFFICE SUITE WITH AMPLE FRONT DOOR PARKING. FULL BASEMENT PARTIALLY FINISHED FOR ADDED SQUARE FOOTAGE.

- 0 baths
- Office
- Commercial Lease
- Active



## Basics

**Category:** Commercial Lease

**Status:** Active

**Lot size:** 0.15 sq ft

**Lot Size Acres:** 0.15 acres

**County:** Washtenaw

**Type:** Office

**Bathrooms:** 0 baths

**Year built:** 2000

**Business Type:** Professional/Office



### Call us now

Phone: (231)730-8781

Email: [tuckerbennerteam@gmail.com](mailto:tuckerbennerteam@gmail.com)

Address: 2747 Lakeshore Drive, Twin Lake, MI 49457



---

## Building Details

**Building Area Total:** 2600 sq ft

**Sewer:** Public Sewer

**Number Of Buildings:** 1

**Construction Materials:** Brick

**Heating:** Forced Air

---

## Amenities & Features

**Parking Total:** 10

**Utilities:** Phone Available, Natural Gas Available, Electricity Available, Natural Gas Connected, Electricity Connected, Water Available, Sewer Available

**Parking Features:** Asphalt, Driveway

**WaterSource:** Public

**Fireplaces Total:** 1

**Cooling:** Central Air

---

## Fees & Taxes

**Tax Assessed Value:** \$79,264

**Tax Year:** 2024

---

## School Information

**High School District:** Saline

---

## Miscellaneous

**Road Surface Type:** Paved    **CrossStreet:** Between Michigan Ave and Bemis

**Tenant Pays:** Electricity, Gas



### Call us now

Phone: (231)730-8781

Email: [tuckerbennerteam@gmail.com](mailto:tuckerbennerteam@gmail.com)

Address: 2747 Lakeshore Drive, Twin Lake, MI 49457

