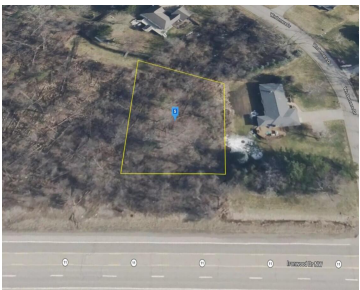
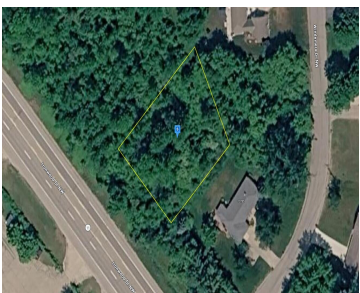
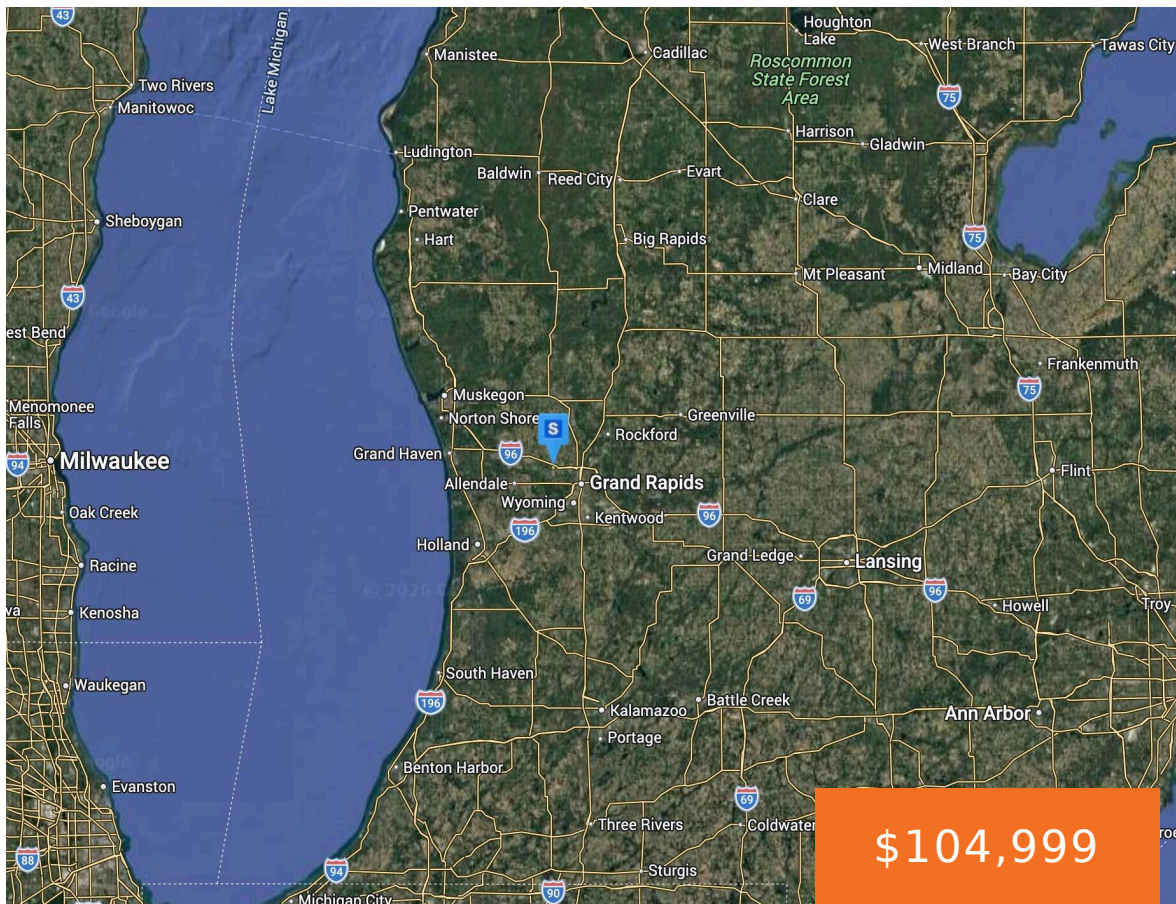


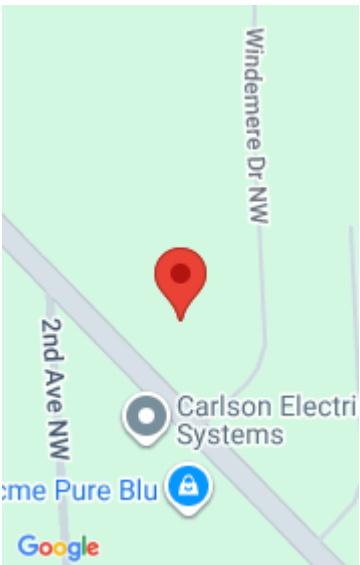
13760, WINDEMERE, GRAND RAPIDS, MI, 49534

<https://tuckerbenner.com>



This 0.45-acre wooded lot in Tallmadge Township offers a serene setting with mature trees and natural privacy. Well and septic are required. Conveniently situated near I-96, US-131, and downtown Grand Rapids, the property combines a quiet, tucked-away atmosphere with easy access to shopping, dining, and major commuter routes—an excellent opportunity to own land in a [...]

- 0 baths
- Lot
- Land
- Active



Basics

Category: Land
Status: Active
Lot size: 0.44 sq ft
Lot Size Acres: 0.44 acres

Type: Lot
Bathrooms: 0 baths
Subdivision Name: Hilsondale Plat
County: Ottawa

Amenities & Features

Utilities: None **Lot Features:** Wooded

Fees & Taxes

Tax Assessed Value: \$5,835 **Tax Year:** 2025
Tax Annual Amount: \$251

School Information

High School District: Kenowa Hills **HighSchool:** Kenowa Hills High School
Middle Or Junior School: Kenowa Hills Middle School **Elementary School:** Kenowa Hills Central Elementary School

Miscellaneous

Road Surface Type: Paved **CrossStreet:** Ironwood Dr
Listing Terms: Cash, Conventional

Call us now